

Datasheet for ABIN6742578
anti-KCNH6 antibody (C-Term)[Go to Product page](#)

1 Image

Overview

Quantity:	100 µL
Target:	KCNH6
Binding Specificity:	C-Term
Reactivity:	Human, Dog, Pig
Host:	Rabbit
Clonality:	Polyclonal
Conjugate:	This KCNH6 antibody is un-conjugated
Application:	Western Blotting (WB)

Product Details

Immunogen:	Synthetic peptide from C-Terminus of human KCNH6 (Q9H252-2, NP_775115). Percent identity by BLAST analysis: Human, Gorilla, Gibbon, Monkey (100%), Marmoset, Mouse, Rat, Bovine, Rabbit, Horse (92%), Galago, Elephant, Bat, Pig (85%), Dog (84%). Type of Immunogen: Synthetic peptide
Specificity:	Human KCNH6 / Kv11.2
Predicted Reactivity:	Percent identity by BLAST analysis: Human (100%) Mouse, Rat, Bovine, Rabbit, Horse (92%) Pig (85%) Dog (84%).
Purification:	Immunoaffinity purified

Target Details

Target:	KCNH6
Alternative Name:	KCNH6 / Kv11.2 / ERG2 (KCNH6 Products)
Background:	Name/Gene ID: KCNH6 Subfamily: Potassium channel - Eag-related Family: Ion Channel Synonyms: KCNH6, Eag related protein 2, Eag-related gene member 2, ERG-2, Eag-related protein 2, ERG2, HERG-2, HERG2, Kv11.2
Gene ID:	81033
NCBI Accession:	NP_775115
UniProt:	Q9H252

Application Details

Application Notes:	Approved: WB (0.2 - 1 µg/mL) Usage: Western Blot: Suggested dilution at 1 µg/mL in 5 % skim milk / PBS buffer, and HRP conjugated anti-Rabbit IgG should be diluted in 1: 50,000 - 100,000 as secondary antibody.
Comment:	Target Species of Antibody: Human
Restrictions:	For Research Use only

Handling

Format:	Lyophilized
Reconstitution:	Distilled water
Concentration:	Lot specific
Buffer:	Lyophilized from PBS with 2 % sucrose
Handling Advice:	Avoid repeat freeze-thaw cycles.
Storage:	4 °C, -20 °C
Storage Comment:	Long term: -20°C, the use of 50% glycerol is recommended if storing aliquots in -20°C for long term use (up to 1 year) Short term (less than 1 week): 4°C. Avoid freeze-thaw cycles.

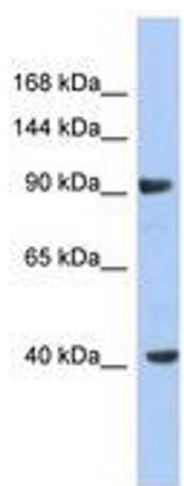


Image 1.