

Datasheet for ABIN6742580  
**anti-KCNIP2 antibody (AA 107-156)**



[Go to Product page](#)

1 Image

## Overview

Quantity:	100 µL
Target:	KCNIP2
Binding Specificity:	AA 107-156
Reactivity:	Human, Mouse, Rat, Dog, Guinea Pig, Horse, Rabbit, Cow, Pig, Monkey, Chicken, Hamster, Xenopus laevis
Host:	Rabbit
Clonality:	Polyclonal
Conjugate:	This KCNIP2 antibody is un-conjugated
Application:	Western Blotting (WB)

## Product Details

Immunogen:	<p>Synthetic peptide located between aa107-156 of human KCNIP2 (Q9NS61, NP_775283).</p> <p>Percent identity by BLAST analysis: Human, Chimpanzee, Gorilla, Gibbon, Monkey, Marmoset, Mouse, Rat, Ferret, Hamster, Elephant, Dog, Bovine, Rabbit, Horse, Pig, Opossum, Guinea pig, Turkey, Zebra finch, Chicken, Xenopus (100%), Galago, Bat (92%), Platypus, Zebrafish (85%), Orangutan, Lizard (84%).</p> <p>Type of Immunogen: Synthetic peptide</p>
Specificity:	Human KCNIP2 / KCHIP2
Predicted Reactivity:	Percent identity by BLAST analysis: Human, Mouse, Rat, Dog, Bovine, Rabbit, Horse, Pig, Guinea pig, Chicken (100%).

## Product Details

Purification: Immunoaffinity purified

## Target Details

Target: KCNIP2

Alternative Name: KCNIP2 / KCHIP2 ([KCNIP2 Products](#))

Background: Name/Gene ID: KCNIP2  
Subfamily: Potassium channel - interacting protein  
Family: Ion Channel

Synonyms: KCNIP2, KCHIP2

Gene ID: 30819

NCBI Accession: [NP\\_775283](#)

UniProt: [Q9NS61](#)

## Application Details

Application Notes: Approved: WB (0.2 - 1 µg/mL)

Usage: Western Blot: Suggested dilution at 1 µg/mL in 5 % skim milk / PBS buffer, and HRP conjugated anti-Rabbit IgG should be diluted in 1: 50,000 - 100,000 as secondary antibody.

Comment: Target Species of Antibody: Human

Restrictions: For Research Use only

## Handling

Format: Lyophilized

Reconstitution: Distilled water

Concentration: Lot specific

Buffer: Lyophilized from PBS with 2 % sucrose

Handling Advice: Avoid repeat freeze-thaw cycles.

Storage: 4 °C, -20 °C

Storage Comment: Long term: -20°C, the use of 50% glycerol is recommended if storing aliquots in -20°C for long

Handling

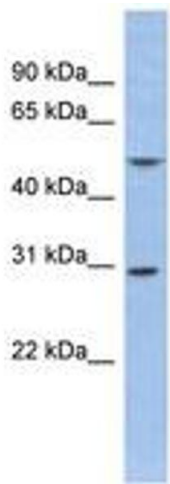
---

term use (up to 1 year)

Short term (less than 1 week): 4°C. Avoid freeze-thaw cycles.

Images

---



**Image 1.**