

Datasheet for ABIN6742581
anti-KCNIP2 antibody (N-Term)



[Go to Product page](#)

1 Image

Overview

Quantity:	100 µL
Target:	KCNIP2
Binding Specificity:	N-Term
Reactivity:	Human, Mouse, Rat, Dog, Guinea Pig, Horse, Pig, Bat, Chicken
Host:	Rabbit
Clonality:	Polyclonal
Conjugate:	This KCNIP2 antibody is un-conjugated
Application:	Western Blotting (WB)

Product Details

Immunogen:	Synthetic peptide from N-Terminus of human KCNIP2 (A6NFF4, NP_775289). Percent identity by BLAST analysis: Human, Gorilla, Gibbon, Galago, Mouse, Rat, Ferret, Elephant, Dog, Bat, Horse, Pig, Guinea pig, Chicken (100%), Opossum (92%). Type of Immunogen: Synthetic peptide
Specificity:	Human KCNIP2 / KCHIP2
Predicted Reactivity:	Percent identity by BLAST analysis: Human, Dog, Horse, Chicken (100%) Mouse, Rat (92%).
Purification:	Immunoaffinity purified

Target Details

Target:	KCNIP2
---------	--------

Target Details

Alternative Name:	KCNIP2 / KCHIP2 (KCNIP2 Products)
Background:	Name/Gene ID: KCNIP2 Subfamily: Potassium channel - interacting protein Family: Ion Channel Synonyms: KCNIP2, KCHIP2

Gene ID:	30819
NCBI Accession:	NP_775289
UniProt:	Q9NS61

Application Details

Application Notes:	Approved: WB (0.2 - 1 µg/mL) Usage: Western Blot: Suggested dilution at 1 µg/mL in 5 % skim milk / PBS buffer, and HRP conjugated anti-Rabbit IgG should be diluted in 1: 50,000 - 100,000 as secondary antibody.
Comment:	Target Species of Antibody: Human
Restrictions:	For Research Use only

Handling

Format:	Lyophilized
Reconstitution:	Distilled water
Concentration:	Lot specific
Buffer:	Lyophilized from PBS with 2 % sucrose
Handling Advice:	Avoid repeat freeze-thaw cycles.
Storage:	4 °C, -20 °C
Storage Comment:	Long term: -20°C, the use of 50% glycerol is recommended if storing aliquots in -20°C for long term use (up to 1 year) Short term (less than 1 week): 4°C. Avoid freeze-thaw cycles.

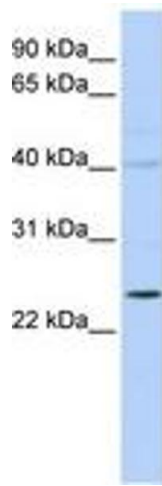


Image 1.