



Datasheet for ABIN6742599  
**anti-MAGEA9 antibody (AA 107-156)**



[Go to Product page](#)

1 Image

Overview

Quantity:	100 µL
Target:	MAGEA9
Binding Specificity:	AA 107-156
Reactivity:	Human
Host:	Rabbit
Clonality:	Polyclonal
Conjugate:	This MAGEA9 antibody is un-conjugated
Application:	Western Blotting (WB)

Product Details

Immunogen:	Synthetic peptide located between aa107-156 of human MAGEA9 (P43362, NP_005356). Percent identity by BLAST analysis: Human, Gorilla, Gibbon (100%), Monkey, Marmoset (92%).  Type of Immunogen: Synthetic peptide
Specificity:	Human MAGEA9
Predicted Reactivity:	Percent identity by BLAST analysis: Human (100%).
Purification:	Immunoaffinity purified

Target Details

Target:	MAGEA9
Alternative Name:	MAGEA9 ( <a href="#">MAGEA9 Products</a> )

## Target Details

---

Background:	Name/Gene ID: MAGEA9  Synonyms: MAGEA9, Cancer/testis antigen 1.9, CT1.9, MAGE-9 antigen, MAGE9, MAGEA9A, Melanoma-associated antigen 9, Melanoma antigen family A, 9, MAGEA9B
Gene ID:	4108
NCBI Accession:	<a href="#">NP_005356</a>
UniProt:	<a href="#">P43362</a>

## Application Details

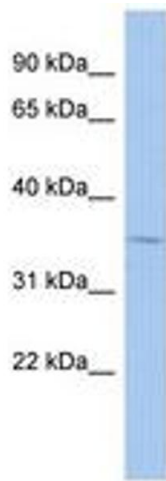
---

Application Notes:	Approved: WB (0.2 - 1 µg/mL)  Usage: Western Blot: Suggested dilution at 1 µg/mL in 5 % skim milk / PBS buffer, and HRP conjugated anti-Rabbit IgG should be diluted in 1: 50,000 - 100,000 as secondary antibody.
Comment:	Target Species of Antibody: Human
Restrictions:	For Research Use only

## Handling

---

Format:	Lyophilized
Reconstitution:	Distilled water
Concentration:	Lot specific
Buffer:	Lyophilized from PBS with 2 % sucrose
Handling Advice:	Avoid repeat freeze-thaw cycles.
Storage:	4 °C, -20 °C
Storage Comment:	Long term: -20°C, the use of 50% glycerol is recommended if storing aliquots in -20°C for long term use (up to 1 year)  Short term (less than 1 week): 4°C. Avoid freeze-thaw cycles.



**Image 1.**