



[Go to Product page](#)

Datasheet for ABIN6742610  
**anti-FOXB1 antibody (AA 91-140)**

1 Image

Overview

Quantity:	100 µL
Target:	FOXB1
Binding Specificity:	AA 91-140
Reactivity:	Human, Mouse, Cow, Horse, Guinea Pig, Pig
Host:	Rabbit
Clonality:	Polyclonal
Conjugate:	This FOXB1 antibody is un-conjugated
Application:	Western Blotting (WB)

Product Details

Immunogen:	Synthetic peptide located between aa91-140 of human FOXB1 (Q99853, NP_036314). Percent identity by BLAST analysis: Human, Chimpanzee, Mouse, Bovine, Horse, Pig, Guinea pig (100%), Gorilla, Gibbon, Monkey, Marmoset, Hamster, Panda, Opossum, Zebra finch (93%), Galago (86%), Xenopus (80%).  Type of Immunogen: Synthetic peptide
Specificity:	Human FOXB1
Predicted Reactivity:	Percent identity by BLAST analysis: Human, Mouse, Bovine, Guinea pig (93%) Xenopus (80%).
Purification:	Immunoaffinity purified

## Target Details

---

Target:	FOXB1
Alternative Name:	FOXB1 ( <a href="#">FOXB1 Products</a> )
Background:	Name/Gene ID: FOXB1 Family: Transcription factor  Synonyms: FOXB1, Forkhead box protein B1, FKH5, Forkhead box B1, Transcription factor FKH-5, HFKH-5
Gene ID:	27023
NCBI Accession:	<a href="#">NP_036314</a>
UniProt:	<a href="#">Q99853</a>

## Application Details

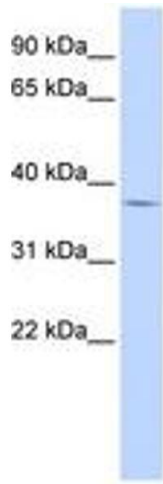
---

Application Notes:	Approved: WB (0.2 - 1 µg/mL)  Usage: Western Blot: Suggested dilution at 1 µg/mL in 5 % skim milk / PBS buffer, and HRP conjugated anti-Rabbit IgG should be diluted in 1: 50,000 - 100,000 as secondary antibody.
Comment:	Target Species of Antibody: Human
Restrictions:	For Research Use only

## Handling

---

Format:	Lyophilized
Reconstitution:	Distilled water
Concentration:	Lot specific
Buffer:	Lyophilized from PBS with 2 % sucrose
Handling Advice:	Avoid repeat freeze-thaw cycles.
Storage:	4 °C, -20 °C
Storage Comment:	Long term: -20°C, the use of 50% glycerol is recommended if storing aliquots in -20°C for long term use (up to 1 year) Short term (less than 1 week): 4°C. Avoid freeze-thaw cycles.



**Image 1.**