

Datasheet for ABIN6742613  
**anti-ZNF224 antibody (AA 612-661)**



[Go to Product page](#)

1 Image

### Overview

Quantity:	100 µL
Target:	ZNF224
Binding Specificity:	AA 612-661
Reactivity:	Human
Host:	Rabbit
Clonality:	Polyclonal
Conjugate:	This ZNF224 antibody is un-conjugated
Application:	Western Blotting (WB)

### Product Details

Immunogen:	Synthetic peptide located between aa612-661 of human ZNF224 (Q9NZL3, NP_037530). Percent identity by BLAST analysis: Human (100%), Gibbon, Marmoset (92%), Monkey (85%).  Type of Immunogen: Synthetic peptide
Specificity:	Human ZNF224
Predicted Reactivity:	Percent identity by BLAST analysis: Human (100%).
Purification:	Immunoaffinity purified

### Target Details

Target:	ZNF224
Alternative Name:	ZNF224 ( <a href="#">ZNF224 Products</a> )

## Target Details

---

Background: Name/Gene ID: ZNF224  
Family: Zinc Finger

Synonyms: ZNF224, Bone marrow zinc finger 2, KOX22, Zinc finger protein 224, ZNF255, Zinc finger protein 255, Zinc finger protein KOX22, ZNF27, BMZF-2, BMZF2, Zinc finger protein 233, Zinc finger protein 27, Zinc finger protein ZNF255, Zinc finger 2, bone marrow

Gene ID: 7767

NCBI Accession: [NP\\_037530](#)

UniProt: [Q9NZL3](#)

## Application Details

---

Application Notes: Approved: WB (0.2 - 1 µg/mL)

Usage: Western Blot: Suggested dilution at 1 µg/mL in 5 % skim milk / PBS buffer, and HRP conjugated anti-Rabbit IgG should be diluted in 1: 50,000 - 100,000 as secondary antibody.

Comment: Target Species of Antibody: Human

Restrictions: For Research Use only

## Handling

---

Format: Lyophilized

Reconstitution: Distilled water

Concentration: Lot specific

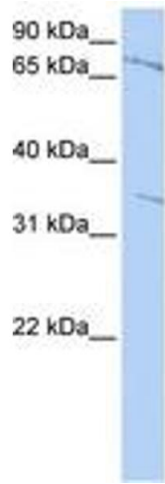
Buffer: Lyophilized from PBS with 2 % sucrose

Handling Advice: Avoid repeat freeze-thaw cycles.

Storage: 4 °C, -20 °C

Storage Comment: Long term: -20°C, the use of 50% glycerol is recommended if storing aliquots in -20°C for long term use (up to 1 year)

Short term (less than 1 week): 4°C. Avoid freeze-thaw cycles.



**Image 1.**