



[Go to Product page](#)

Datasheet for ABIN6742618
anti-VSX1 antibody (AA 108-157)

1 Image

Overview

Quantity:	100 µL
Target:	VSX1
Binding Specificity:	AA 108-157
Reactivity:	Human, Mouse, Dog
Host:	Rabbit
Clonality:	Polyclonal
Conjugate:	This VSX1 antibody is un-conjugated
Application:	Western Blotting (WB)

Product Details

Immunogen:	Synthetic peptide located between aa108-157 of human VSX1 (Q9NZR4, NP_055403). Percent identity by BLAST analysis: Human (100%), Gorilla, Gibbon, Monkey, Galago, Marmoset, Bovine, Horse (92%), Dog (85%), Mouse (78%). Type of Immunogen: Synthetic peptide
Specificity:	Human VSX1
Predicted Reactivity:	Percent identity by BLAST analysis: Human (100%) Bovine, Horse (92%) Dog (85%).
Purification:	Immunoaffinity purified

Target Details

Target:	VSX1
---------	------

Target Details

Alternative Name:	PPD / VSX1 (VSX1 Products)
Background:	Name/Gene ID: VSX1 Synonyms: VSX1, Homeodomain protein RINX, PPD, RINX, Transcription factor VSX1, Visual system homeobox 1, PPCD, CAASDS, KTCN, KTCN1
Gene ID:	30813
NCBI Accession:	NP_055403
UniProt:	Q9NZR4

Application Details

Application Notes:	Approved: WB (0.2 - 1 µg/mL) Usage: Western Blot: Suggested dilution at 1 µg/mL in 5 % skim milk / PBS buffer, and HRP conjugated anti-Rabbit IgG should be diluted in 1: 50,000 - 100,000 as secondary antibody.
Comment:	Target Species of Antibody: Human
Restrictions:	For Research Use only

Handling

Format:	Lyophilized
Reconstitution:	Distilled water
Concentration:	Lot specific
Buffer:	Lyophilized from PBS with 2 % sucrose
Handling Advice:	Avoid repeat freeze-thaw cycles.
Storage:	4 °C, -20 °C
Storage Comment:	Long term: -20°C, the use of 50% glycerol is recommended if storing aliquots in -20°C for long term use (up to 1 year) Short term (less than 1 week): 4°C. Avoid freeze-thaw cycles.

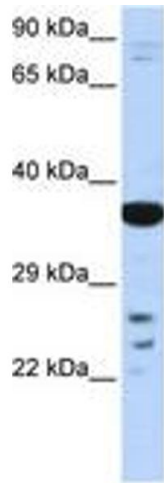


Image 1.