



[Go to Product page](#)

Datasheet for ABIN6742621
anti-MLXIP antibody (AA 395-444)

1 Image

Overview

Quantity:	100 µL
Target:	MLXIP
Binding Specificity:	AA 395-444
Reactivity:	Human, Mouse, Dog, Rabbit
Host:	Rabbit
Clonality:	Polyclonal
Conjugate:	This MLXIP antibody is un-conjugated
Application:	Western Blotting (WB)

Product Details

Immunogen:	Synthetic peptide located between aa395-444 of human MLXIP (Q9HAP2, NP_055753). Percent identity by BLAST analysis: Human, Gorilla, Gibbon, Marmoset, Dog (100%), Monkey (92%), Rabbit (85%), Galago (84%), Elephant (83%), Mouse (78%). Type of Immunogen: Synthetic peptide
Specificity:	Human MLXIP
Predicted Reactivity:	Percent identity by BLAST analysis: Human, Dog (100%) Rabbit (85%).
Purification:	Immunoaffinity purified

Target Details

Target:	MLXIP
---------	-------

Target Details

Alternative Name: MLXIP / MONDOA ([MLXIP Products](#))

Background: Name/Gene ID: MLXIP

Synonyms: MLXIP, MLX-interacting protein, MLX interactor, MONDOA, BHLHe36, KIAA0867, MIR, MLX interacting protein

Gene ID: 22877

NCBI Accession: [NP_055753](#)

UniProt: [Q9HAP2](#)

Application Details

Application Notes: Approved: WB (0.2 - 1 µg/mL)

Usage: Western Blot: Suggested dilution at 1 µg/mL in 5 % skim milk / PBS buffer, and HRP conjugated anti-Rabbit IgG should be diluted in 1: 50,000 - 100,000 as secondary antibody.

Comment: Target Species of Antibody: Human

Restrictions: For Research Use only

Handling

Format: Lyophilized

Reconstitution: Distilled water

Concentration: Lot specific

Buffer: Lyophilized from PBS with 2 % sucrose

Handling Advice: Avoid repeat freeze-thaw cycles.

Storage: 4 °C, -20 °C

Storage Comment: Long term: -20°C, the use of 50% glycerol is recommended if storing aliquots in -20°C for long term use (up to 1 year)

Short term (less than 1 week): 4°C. Avoid freeze-thaw cycles.

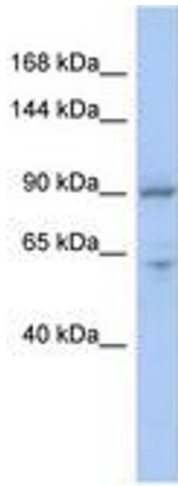


Image 1.