

Datasheet for ABIN6742628 anti-NKRF antibody (AA 61-110)



[Go to Product page](#)

1 Image

Overview

Quantity:	100 µL
Target:	NKRF
Binding Specificity:	AA 61-110
Reactivity:	Human, Mouse, Rat, Cow, Guinea Pig, Pig
Host:	Rabbit
Clonality:	Polyclonal
Conjugate:	This NKRF antibody is un-conjugated
Application:	Western Blotting (WB)

Product Details

Immunogen:	Synthetic peptide located between aa61-110 of human NKRF (A3F768, NP_060014). Percent identity by BLAST analysis: Human, Chimpanzee, Pig (100%), Gorilla, Gibbon, Monkey, Galago, Marmoset, Dog, Rabbit, Horse (92%), Mouse, Hamster, Elephant, Bovine, Guinea pig (85%), Rat (84%), Bat (80%). Type of Immunogen: Synthetic peptide
Specificity:	Human NKRF
Predicted Reactivity:	Percent identity by BLAST analysis: Human (100%) Dog, Rabbit, Horse, Pig (92%) Mouse, Bovine, Guinea pig (85%) Rat (84%).
Purification:	Immunoaffinity purified

Target Details

Target:	NKRF
Alternative Name:	NKRF / NRF (NKRF Products)
Background:	Name/Gene ID: NKRF Synonyms: NKRF, NFkB-repressing factor, ITBA4, Protein ITBA4, NF-kappaB repressing factor, NFkB repressing factor, Transcription factor NRF, NF-kappa-B-repressing factor, NRF
Gene ID:	55922
NCBI Accession:	NP_060014
UniProt:	O15226

Application Details

Application Notes:	Approved: WB (0.2 - 1 µg/mL) Usage: Western Blot: Suggested dilution at 1 µg/mL in 5 % skim milk / PBS buffer, and HRP conjugated anti-Rabbit IgG should be diluted in 1: 50,000 - 100,000 as secondary antibody.
Comment:	Target Species of Antibody: Human
Restrictions:	For Research Use only

Handling

Format:	Lyophilized
Reconstitution:	Distilled water
Concentration:	Lot specific
Buffer:	Lyophilized from PBS with 2 % sucrose
Handling Advice:	Avoid repeat freeze-thaw cycles.
Storage:	4 °C, -20 °C
Storage Comment:	Long term: -20°C, the use of 50% glycerol is recommended if storing aliquots in -20°C for long term use (up to 1 year) Short term (less than 1 week): 4°C. Avoid freeze-thaw cycles.

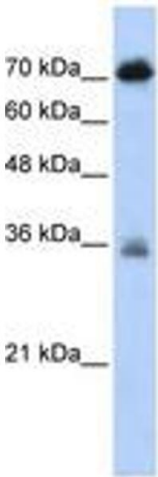


Image 1.