



[Go to Product page](#)

Datasheet for ABIN6742633  
**anti-SSX5 antibody (AA 143-192)**

1 Image

Overview

Quantity:	100 µL
Target:	SSX5
Binding Specificity:	AA 143-192
Reactivity:	Human, Monkey
Host:	Rabbit
Clonality:	Polyclonal
Conjugate:	This SSX5 antibody is un-conjugated
Application:	Western Blotting (WB)

Product Details

Immunogen:	Synthetic peptide located between aa143-192 of human SSX5 (Q5JQ60, NP_066295). Percent identity by BLAST analysis: Human, Monkey (100%), Gorilla (92%), Gibbon (85%).  Type of Immunogen: Synthetic peptide
Specificity:	Human SSX5
Predicted Reactivity:	Percent identity by BLAST analysis: Human (100%).
Purification:	Immunoaffinity purified

Target Details

Target:	SSX5
Alternative Name:	SSX5 ( <a href="#">SSX5 Products</a> )

## Target Details

---

Background: Name/Gene ID: SSX5  
Synonyms: SSX5, Protein SSX5

Gene ID: 6758

NCBI Accession: [NP\\_066295](#)

UniProt: [O60225](#)

## Application Details

---

Application Notes: Approved: WB (0.2 - 1 µg/mL)  
Usage: Western Blot: Suggested dilution at 1 µg/mL in 5 % skim milk / PBS buffer, and HRP conjugated anti-Rabbit IgG should be diluted in 1: 50,000 - 100,000 as secondary antibody.

Comment: Target Species of Antibody: Human

Restrictions: For Research Use only

## Handling

---

Format: Lyophilized

Reconstitution: Distilled water

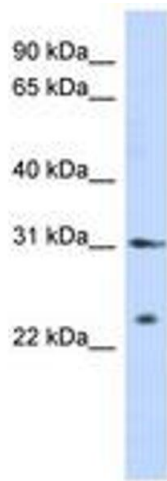
Concentration: Lot specific

Buffer: Lyophilized from PBS with 2 % sucrose

Handling Advice: Avoid repeat freeze-thaw cycles.

Storage: 4 °C, -20 °C

Storage Comment: Long term: -20°C, the use of 50% glycerol is recommended if storing aliquots in -20°C for long term use (up to 1 year)  
Short term (less than 1 week): 4°C. Avoid freeze-thaw cycles.



**Image 1.**