



[Go to Product page](#)

Datasheet for ABIN6742634

anti-ZNF248 antibody (AA 143-192)

1 Image

Overview

Quantity:	100 µL
Target:	ZNF248
Binding Specificity:	AA 143-192
Reactivity:	Human, Horse, Pig
Host:	Rabbit
Clonality:	Polyclonal
Conjugate:	This ZNF248 antibody is un-conjugated
Application:	Western Blotting (WB)

Product Details

Immunogen:	Synthetic peptide located between aa143-192 of human ZNF248 (Q8NDW4, NP_066383). Percent identity by BLAST analysis: Human, Gorilla, Orangutan, Gibbon, Monkey (100%), Galago, Marmoset (92%), Hamster (85%), Mouse, Rat, Bovine, Bat, Horse (83%). Type of Immunogen: Synthetic peptide
Specificity:	Human ZNF248
Predicted Reactivity:	Percent identity by BLAST analysis: Human (100%).
Purification:	Immunoaffinity purified

Target Details

Target:	ZNF248
---------	--------

Target Details

Alternative Name: ZNF248 ([ZNF248 Products](#))

Background: Name/Gene ID: ZNF248

Synonyms: ZNF248, BA162G10.3, KRAB protein domain, Zinc finger protein 248

Gene ID: 57209

NCBI Accession: [NP_066383](#)

UniProt: [Q8NDW4](#)

Application Details

Application Notes: Approved: WB (0.2 - 1 µg/mL)

Usage: Western Blot: Suggested dilution at 1 µg/mL in 5 % skim milk / PBS buffer, and HRP conjugated anti-Rabbit IgG should be diluted in 1: 50,000 - 100,000 as secondary antibody.

Comment: Target Species of Antibody: Human

Restrictions: For Research Use only

Handling

Format: Lyophilized

Reconstitution: Distilled water

Concentration: Lot specific

Buffer: Lyophilized from PBS with 2 % sucrose

Handling Advice: Avoid repeat freeze-thaw cycles.

Storage: 4 °C, -20 °C

Storage Comment: Long term: -20°C, the use of 50% glycerol is recommended if storing aliquots in -20°C for long term use (up to 1 year)

Short term (less than 1 week): 4°C. Avoid freeze-thaw cycles.

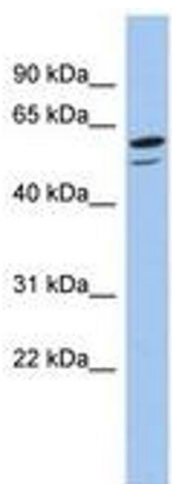


Image 1.