

Datasheet for ABIN6742636  
**anti-EBF2 antibody (AA 359-408)**[Go to Product page](#)

## 1 Image

## Overview

Quantity:	100 µL
Target:	EBF2
Binding Specificity:	AA 359-408
Reactivity:	Human, Mouse, Rat, Cow, Guinea Pig, Horse, Rabbit, Dog, Monkey, Pig, Bat, Chicken, Xenopus laevis
Host:	Rabbit
Clonality:	Polyclonal
Conjugate:	This EBF2 antibody is un-conjugated
Application:	Western Blotting (WB)

## Product Details

Immunogen:	Synthetic peptide located between aa359-408 of human EBF2 (Q9HAK2, NP_073150). Percent identity by BLAST analysis: Human, Chimpanzee, Gorilla, Gibbon, Monkey, Galago, Marmoset, Mouse, Rat, Elephant, Panda, Dog, Bovine, Bat, Rabbit, Horse, Pig, Opossum, Guinea pig, Turkey, Chicken, Platypus, Xenopus (100%), Zebra finch (92%), Dolphin, Lizard, Stickleback, Zebrafish (85%).  Type of Immunogen: Synthetic peptide
Specificity:	Human EBF2
Predicted Reactivity:	Percent identity by BLAST analysis: Human, Rat, Dog, Horse, Pig, Chicken (100%).
Purification:	Immunoaffinity purified



## Target Details

Target:	EBF2
Alternative Name:	EBF2 ( <a href="#">EBF2 Products</a> )
Background:	Name/Gene ID: EBF2  Synonyms: EBF2, Collier, Olf and EBF 2, EBF-2, Early B-cell factor 2, OE-3, O/E-3, COE2, OLF-1/EBF-LIKE 3, Transcription factor COE2
Gene ID:	64641
NCBI Accession:	<a href="#">NP_073150</a>
UniProt:	<a href="#">Q9HAK2</a>

## Application Details

Application Notes:	Approved: WB (0.2 - 1 µg/mL)  Usage: Western Blot: Suggested dilution at 1 µg/mL in 5 % skim milk / PBS buffer, and HRP conjugated anti-Rabbit IgG should be diluted in 1: 50,000 - 100,000 as secondary antibody.  Not recommended for: IHC-P
Comment:	Target Species of Antibody: Human
Restrictions:	For Research Use only

## Handling

Format:	Lyophilized
Reconstitution:	Distilled water
Concentration:	Lot specific
Buffer:	Lyophilized from PBS with 2 % sucrose
Handling Advice:	Avoid repeat freeze-thaw cycles.
Storage:	4 °C, -20 °C
Storage Comment:	Long term: -20°C, the use of 50% glycerol is recommended if storing aliquots in -20°C for long term use (up to 1 year)  Short term (less than 1 week): 4°C. Avoid freeze-thaw cycles.



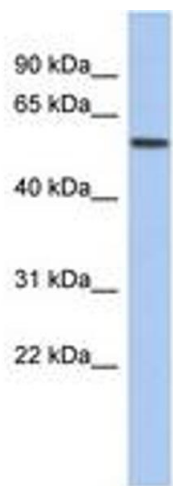


Image 1.