



[Go to Product page](#)

Datasheet for ABIN6742641
anti-ZNF613 antibody (AA 108-157)

1 Image

Overview

Quantity:	100 µL
Target:	ZNF613
Binding Specificity:	AA 108-157
Reactivity:	Human, Monkey
Host:	Rabbit
Clonality:	Polyclonal
Conjugate:	This ZNF613 antibody is un-conjugated
Application:	Western Blotting (WB)

Product Details

Immunogen:	Synthetic peptide located between aa108-157 of human ZNF613 (Q6PF04, NP_001026891). Percent identity by BLAST analysis: Human, Gorilla, Gibbon, Monkey, Marmoset (100%), Orangutan (83%). Type of Immunogen: Synthetic peptide
Specificity:	Human ZNF613
Predicted Reactivity:	Percent identity by BLAST analysis: Human (100%) Orangutan, Monkey (83%).
Purification:	Immunoaffinity purified

Target Details

Target:	ZNF613
---------	--------

Target Details

Alternative Name:	ZNF613 (ZNF613 Products)
Background:	Name/Gene ID: ZNF613 Family: Zinc Finger Synonyms: ZNF613, Zinc finger protein 613
Gene ID:	79898
NCBI Accession:	NP_001026891
UniProt:	Q6PF04

Application Details

Application Notes:	Approved: WB (0.2 - 1 µg/mL) Usage: Western Blot: Suggested dilution at 1 µg/mL in 5 % skim milk / PBS buffer, and HRP conjugated anti-Rabbit IgG should be diluted in 1: 50,000 - 100,000 as secondary antibody.
Comment:	Target Species of Antibody: Human
Restrictions:	For Research Use only

Handling

Format:	Lyophilized
Reconstitution:	Distilled water
Concentration:	Lot specific
Buffer:	Lyophilized from PBS with 2 % sucrose
Handling Advice:	Avoid repeat freeze-thaw cycles.
Storage:	4 °C, -20 °C
Storage Comment:	Long term: -20°C, the use of 50% glycerol is recommended if storing aliquots in -20°C for long term use (up to 1 year) Short term (less than 1 week): 4°C. Avoid freeze-thaw cycles.

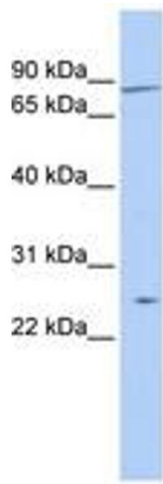


Image 1.