



[Go to Product page](#)

Datasheet for ABIN6742646  
**anti-SSBP4 antibody (C-Term)**

1 Image

Overview

Quantity:	100 µL
Target:	SSBP4
Binding Specificity:	C-Term
Reactivity:	Human, Mouse, Rat, Cow, Bat, Monkey
Host:	Rabbit
Clonality:	Polyclonal
Conjugate:	This SSBP4 antibody is un-conjugated
Application:	Western Blotting (WB)

Product Details

Immunogen:	Synthetic peptide from C-Terminus of human SSBP4 (Q9BWG4, NP_116016). Percent identity by BLAST analysis: Human, Chimpanzee, Gorilla, Monkey, Galago, Elephant, Bovine, Bat (100%), Dog, Guinea pig (92%), Marmoset, Mouse (85%), Rat (84%).  Type of Immunogen: Synthetic peptide
Specificity:	Human SSBP4
Predicted Reactivity:	Percent identity by BLAST analysis: Human, Bovine (100%) Dog, Guinea pig (92%) Mouse (85%) Rat (84%).
Purification:	Immunoaffinity purified

## Target Details

---

Target:	SSBP4
Alternative Name:	SSBP4 ( <a href="#">SSBP4 Products</a> )
Background:	Name/Gene ID: SSBP4  Synonyms: SSBP4
Gene ID:	170463
NCBI Accession:	<a href="#">NP_116016</a>
UniProt:	<a href="#">Q9BWG4</a>

## Application Details

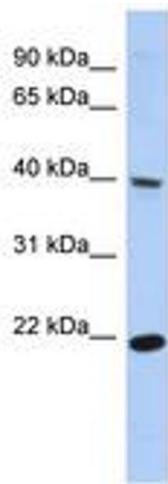
---

Application Notes:	Approved: WB (0.2 - 1 µg/mL)  Usage: Western Blot: Suggested dilution at 1 µg/mL in 5 % skim milk / PBS buffer, and HRP conjugated anti-Rabbit IgG should be diluted in 1: 50,000 - 100,000 as secondary antibody.
Comment:	Target Species of Antibody: Human
Restrictions:	For Research Use only

## Handling

---

Format:	Lyophilized
Reconstitution:	Distilled water
Concentration:	Lot specific
Buffer:	Lyophilized from PBS with 2 % sucrose
Handling Advice:	Avoid repeat freeze-thaw cycles.
Storage:	4 °C, -20 °C
Storage Comment:	Long term: -20°C, the use of 50% glycerol is recommended if storing aliquots in -20°C for long term use (up to 1 year)  Short term (less than 1 week): 4°C. Avoid freeze-thaw cycles.



**Image 1.**