



[Go to Product page](#)

Datasheet for ABIN6742661  
**anti-ZNF488 antibody (AA 108-157)**

1 Image

Overview

Quantity:	100 µL
Target:	ZNF488
Binding Specificity:	AA 108-157
Reactivity:	Human
Host:	Rabbit
Clonality:	Polyclonal
Conjugate:	This ZNF488 antibody is un-conjugated
Application:	Western Blotting (WB)

Product Details

Immunogen:	Synthetic peptide located between aa108-157 of human ZNF488 (Q96MN9, NP_694579). Percent identity by BLAST analysis: Human, Gibbon (100%).  Type of Immunogen: Synthetic peptide
Specificity:	Human ZNF488
Predicted Reactivity:	Percent identity by BLAST analysis: Human (100%).
Purification:	Immunoaffinity purified

Target Details

Target:	ZNF488
Alternative Name:	ZNF488 ( <a href="#">ZNF488 Products</a> )

## Target Details

---

Background: Name/Gene ID: ZNF488  
Family: Zinc Finger  
Synonyms: ZNF488, Zinc finger protein 488

---

Gene ID: 118738

---

NCBI Accession: [NP\\_694579](#)

---

UniProt: [Q96MN9](#)

---

## Application Details

---

Application Notes: Approved: WB (0.2 - 1 µg/mL)  
Usage: Western Blot: Suggested dilution at 1 µg/mL in 5 % skim milk / PBS buffer, and HRP conjugated anti-Rabbit IgG should be diluted in 1: 50,000 - 100,000 as secondary antibody.

---

Comment: Target Species of Antibody: Human

---

Restrictions: For Research Use only

---

## Handling

---

Format: Lyophilized

---

Reconstitution: Distilled water

---

Concentration: Lot specific

---

Buffer: Lyophilized from PBS with 2 % sucrose

---

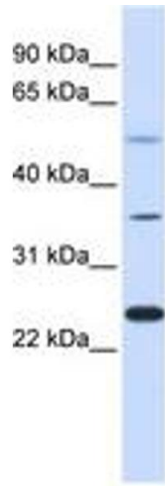
Handling Advice: Avoid repeat freeze-thaw cycles.

---

Storage: 4 °C, -20 °C

---

Storage Comment: Long term: -20°C, the use of 50% glycerol is recommended if storing aliquots in -20°C for long term use (up to 1 year)  
Short term (less than 1 week): 4°C. Avoid freeze-thaw cycles.



**Image 1.**