



[Go to Product page](#)

Datasheet for ABIN6742671
anti-DDX3X antibody (N-Term)

1 Image

Overview

Quantity:	100 µL
Target:	DDX3X
Binding Specificity:	N-Term
Reactivity:	Human, Mouse, Rat, Cow, Dog, Pig, Horse, Monkey, Bat
Host:	Rabbit
Clonality:	Polyclonal
Conjugate:	This DDX3X antibody is un-conjugated
Application:	Western Blotting (WB)

Product Details

Immunogen:	Synthetic peptide from N-Terminus of human DDX3X (O00571, NP_001347). Percent identity by BLAST analysis: Human, Chimpanzee, Gorilla, Gibbon, Marmoset, Mouse, Rat, Elephant, Dog, Bovine, Bat, Horse, Pig, Platypus (100%), Galago, Hamster, Guinea pig (92%). Type of Immunogen: Synthetic peptide
Specificity:	Human DDX3X
Predicted Reactivity:	Percent identity by BLAST analysis: Human, Mouse, Dog, Bovine, Pig (100%) Rat, Guinea pig (92%).
Purification:	Immunoaffinity purified

Target Details

Target:	DDX3X
Alternative Name:	DDX3 / DDX3X (DDX3X Products)
Background:	Name/Gene ID: DDX3X Family: DEAD box protein Synonyms: DDX3X, CAP-Rf, DDX14, DDX3, DEAD box, X isoform, DBX, Dead box protein 3, DEAD/H box-3, Helicase like protein 2, Helicase-like protein 2, HLP2
Gene ID:	1654
NCBI Accession:	NP_001347
UniProt:	O00571
Pathways:	Ribonucleoprotein Complex Subunit Organization , Positive Regulation of Endopeptidase Activity , Negative Regulation of intrinsic apoptotic Signaling , Ribosome Assembly

Application Details

Application Notes:	Approved: WB (0.2 - 1 µg/mL) Usage: Western Blot: Suggested dilution at 1 µg/mL in 5 % skim milk / PBS buffer, and HRP conjugated anti-Rabbit IgG should be diluted in 1: 50,000 - 100,000 as secondary antibody.
Comment:	Target Species of Antibody: Human
Restrictions:	For Research Use only

Handling

Format:	Lyophilized
Reconstitution:	Distilled water
Concentration:	Lot specific
Buffer:	Lyophilized from PBS with 2 % sucrose
Handling Advice:	Avoid repeat freeze-thaw cycles.
Storage:	4 °C, -20 °C
Storage Comment:	Long term: -20°C, the use of 50% glycerol is recommended if storing aliquots in -20°C for long term use (up to 1 year)

Handling

Short term (less than 1 week): 4°C. Avoid freeze-thaw cycles.

Images

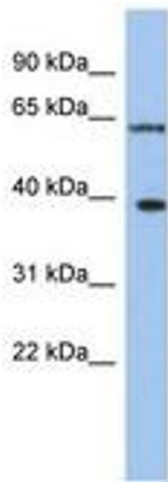


Image 1.