



[Go to Product page](#)

Datasheet for ABIN6742696
anti-PGBD3 antibody (AA 71-120)

1 Image

Overview

Quantity:	100 µL
Target:	PGBD3
Binding Specificity:	AA 71-120
Reactivity:	Human
Host:	Rabbit
Clonality:	Polyclonal
Conjugate:	This PGBD3 antibody is un-conjugated
Application:	Western Blotting (WB)

Product Details

Immunogen:	Synthetic peptide located between aa71-120 of human PGBD3 (Q8N328, NP_736609). Percent identity by BLAST analysis: Human, Gorilla, Gibbon, Monkey (100%), Marmoset (92%). Type of Immunogen: Synthetic peptide
Specificity:	Human PGBD3
Predicted Reactivity:	Percent identity by BLAST analysis: Human (100%).
Purification:	Immunoaffinity purified

Target Details

Target:	PGBD3
Alternative Name:	PGBD3 (PGBD3 Products)

Target Details

Background: Name/Gene ID: PGBD3
Family: PiggyBac
Synonyms: PGBD3

Gene ID: 267004

NCBI Accession: [NP_736609](#)

Pathways: [Chromatin Binding](#)

Application Details

Application Notes: Approved: WB (0.2 - 1 µg/mL)
Usage: Western Blot: Suggested dilution at 1 µg/mL in 5 % skim milk / PBS buffer, and HRP conjugated anti-Rabbit IgG should be diluted in 1: 50,000 - 100,000 as secondary antibody.

Comment: Target Species of Antibody: Human

Restrictions: For Research Use only

Handling

Format: Lyophilized

Reconstitution: Distilled water

Concentration: Lot specific

Buffer: Lyophilized from PBS with 2 % sucrose

Handling Advice: Avoid repeat freeze-thaw cycles.

Storage: 4 °C, -20 °C

Storage Comment: Long term: -20°C, the use of 50% glycerol is recommended if storing aliquots in -20°C for long term use (up to 1 year)
Short term (less than 1 week): 4°C. Avoid freeze-thaw cycles.

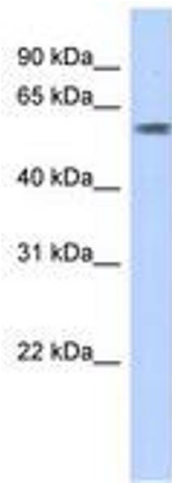


Image 1.