

Datasheet for ABIN6742703  
**anti-GJC1 antibody (C-Term)**[Go to Product page](#)

## 1 Image

## Overview

Quantity:	100 µL
Target:	GJC1
Binding Specificity:	C-Term
Reactivity:	Human, Monkey
Host:	Rabbit
Clonality:	Polyclonal
Conjugate:	This GJC1 antibody is un-conjugated
Application:	Western Blotting (WB)

## Product Details

Immunogen:	Synthetic peptide from C-Terminus of human GJC1 (P36383, NP_005488). Percent identity by BLAST analysis: Human, Chimpanzee, Gorilla, Gibbon, Monkey (100%), Galago, Dog, Bovine, Rabbit, Horse, Pig, Opossum, Turkey, Zebra finch, Chicken (92%), Panda, Bat (85%).  Type of Immunogen: Synthetic peptide
Specificity:	Human GJC1 / Connexin 45
Predicted Reactivity:	Percent identity by BLAST analysis: Human (100%).
Purification:	Immunoaffinity purified

## Target Details

Target:	GJC1
---------	------

## Target Details

Alternative Name:	GJC1 / CX45 / Connexin 45 ( <a href="#">GJC1 Products</a> )
Background:	Name/Gene ID: GJC1 Subfamily: Connexin Family: Ion Channel  Synonyms: GJC1, Connexin-45, Connexin 45, Gap junction alpha-7 protein, Gap junction gamma-1 protein, CX45, Gap junction protein alpha-6, GJA7
Gene ID:	10052
NCBI Accession:	<a href="#">NP_005488</a>
UniProt:	<a href="#">P36383</a>
Pathways:	<a href="#">Cell-Cell Junction Organization</a>

## Application Details

Application Notes:	Approved: WB (0.2 - 1 µg/mL)  Usage: Western Blot: Suggested dilution at 1 µg/mL in 5 % skim milk / PBS buffer, and HRP conjugated anti-Rabbit IgG should be diluted in 1: 50,000 - 100,000 as secondary antibody.  Not recommended for: IHC-P
Comment:	Target Species of Antibody: Human
Restrictions:	For Research Use only

## Handling

Format:	Lyophilized
Reconstitution:	Distilled water
Concentration:	Lot specific
Buffer:	Lyophilized from PBS with 2 % sucrose
Handling Advice:	Avoid repeat freeze-thaw cycles.
Storage:	4 °C, -20 °C
Storage Comment:	Long term: -20°C, the use of 50% glycerol is recommended if storing aliquots in -20°C for long

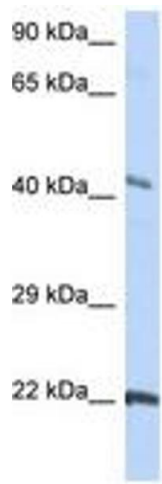
Handling

---

term use (up to 1 year)  
Short term (less than 1 week): 4°C. Avoid freeze-thaw cycles.

Images

---



**Image 1.**