

Datasheet for ABIN6742707
anti-MCM10 antibody (AA 648-697)[Go to Product page](#)

1 Image

Overview

Quantity:	100 µL
Target:	MCM10
Binding Specificity:	AA 648-697
Reactivity:	Human, Dog, Cow, Rabbit, Monkey
Host:	Rabbit
Clonality:	Polyclonal
Conjugate:	This MCM10 antibody is un-conjugated
Application:	Western Blotting (WB)

Product Details

Immunogen:	Synthetic peptide located between aa648-697 of human MCM10 (B7ZKZ8, NP_060988). Percent identity by BLAST analysis: Human, Gorilla, Gibbon, Monkey (100%), Horse (92%), Marmoset, Dog, Rabbit (85%). Type of Immunogen: Synthetic peptide
Specificity:	Human MCM10
Predicted Reactivity:	Percent identity by BLAST analysis: Human (100%) Horse (92%) Dog, Rabbit (85%).
Purification:	Immunoaffinity purified

Target Details

Target:	MCM10
---------	-------

Target Details

Alternative Name:	MCM10 (MCM10 Products)
Background:	Name/Gene ID: MCM10 Synonyms: MCM10, CNA43, HsMCM10, Homolog of yeast MCM10, PRO2249, DNA43, Protein MCM10 homolog
Gene ID:	55388
NCBI Accession:	NP_060988
UniProt:	Q7L590
Pathways:	Mitotic G1-G1/S Phases, DNA Replication

Application Details

Application Notes:	Approved: WB (0.2 - 1 µg/mL) Usage: Western Blot: Suggested dilution at 1 µg/mL in 5 % skim milk / PBS buffer, and HRP conjugated anti-Rabbit IgG should be diluted in 1: 50,000 - 100,000 as secondary antibody.
Comment:	Target Species of Antibody: Human
Restrictions:	For Research Use only

Handling

Format:	Lyophilized
Reconstitution:	Distilled water
Concentration:	Lot specific
Buffer:	Lyophilized from PBS with 2 % sucrose
Handling Advice:	Avoid repeat freeze-thaw cycles.
Storage:	4 °C, -20 °C
Storage Comment:	Long term: -20°C, the use of 50% glycerol is recommended if storing aliquots in -20°C for long term use (up to 1 year) Short term (less than 1 week): 4°C. Avoid freeze-thaw cycles.

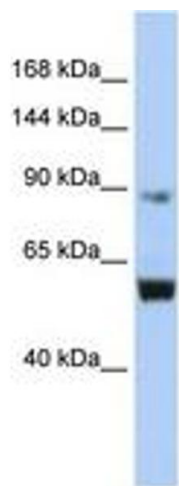


Image 1.