



Datasheet for ABIN6742719  
**anti-AKAP7 antibody (AA 113-162)**



[Go to Product page](#)

1 Image

Overview

Quantity:	100 µL
Target:	AKAP7
Binding Specificity:	AA 113-162
Reactivity:	Human
Host:	Rabbit
Clonality:	Polyclonal
Conjugate:	This AKAP7 antibody is un-conjugated
Application:	Western Blotting (WB)

Product Details

Immunogen:	Synthetic peptide located between aa113-162 of human AKAP7 (Q9P0M2, NP_057461). Percent identity by BLAST analysis: Human, Chimpanzee (100%), Gorilla, Galago, Bat, Rabbit (90%).  Type of Immunogen: Synthetic peptide
Specificity:	Human AKAP7
Predicted Reactivity:	Percent identity by BLAST analysis: Human, Rabbit (90%).
Purification:	Immunoaffinity purified

Target Details

Target:	AKAP7
---------	-------

## Target Details

---

Alternative Name: [AKAP7 \(AKAP7 Products\)](#)

Background: Name/Gene ID: AKAP7

Synonyms: AKAP7, A-kinase anchor protein 9 kDa, A-kinase anchor protein 18 kDa, AKAP-7 isoforms alpha and beta, AKAP-7 isoform gamma, AKAP 18, AKAP15, AKAP18, PRKA7 isoform gamma, PRKA7 isoforms alpha/beta

Gene ID: 9465

NCBI Accession: [NP\\_057461](#)

UniProt: [Q9P0M2](#)

## Application Details

---

Application Notes: Approved: WB (0.2 - 1 µg/mL)

Usage: Western Blot: Suggested dilution at 1 µg/mL in 5 % skim milk / PBS buffer, and HRP conjugated anti-Rabbit IgG should be diluted in 1: 50,000 - 100,000 as secondary antibody.

Comment: Target Species of Antibody: Human

Restrictions: For Research Use only

## Handling

---

Format: Lyophilized

Reconstitution: Distilled water

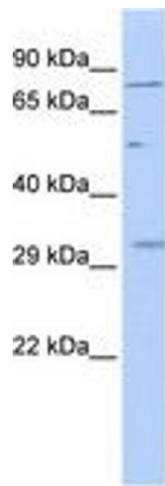
Concentration: Lot specific

Buffer: Lyophilized from PBS with 2 % sucrose

Handling Advice: Avoid repeat freeze-thaw cycles.

Storage: 4 °C, -20 °C

Storage Comment: Long term: -20°C, the use of 50% glycerol is recommended if storing aliquots in -20°C for long term use (up to 1 year)  
Short term (less than 1 week): 4°C. Avoid freeze-thaw cycles.



**Image 1.**