



Datasheet for ABIN6742728
anti-ZNF688 antibody (AA 72-121)



[Go to Product page](#)

1 Image

Overview

Quantity:	100 µL
Target:	ZNF688
Binding Specificity:	AA 72-121
Reactivity:	Human, Monkey
Host:	Rabbit
Clonality:	Polyclonal
Conjugate:	This ZNF688 antibody is un-conjugated
Application:	Western Blotting (WB)

Product Details

Immunogen:	Synthetic peptide located between aa72-121 of human ZNF688 (A8MV39, NP_001019854). Percent identity by BLAST analysis: Human, Chimpanzee, Gorilla, Monkey (100%). Type of Immunogen: Synthetic peptide
Specificity:	Human ZNF688
Predicted Reactivity:	Percent identity by BLAST analysis: Human (100%).
Purification:	Immunoaffinity purified

Target Details

Target:	ZNF688
Alternative Name:	ZNF688 (ZNF688 Products)

Target Details

Background: Name/Gene ID: ZNF688
Synonyms: ZNF688, Zinc finger protein 688

Gene ID: 146542

NCBI Accession: [NP_001019854](#)

UniProt: [P0C7X2](#)

Application Details

Application Notes: Approved: WB (0.2 - 1 µg/mL)
Usage: Western Blot: Suggested dilution at 1 µg/mL in 5 % skim milk / PBS buffer, and HRP conjugated anti-Rabbit IgG should be diluted in 1: 50,000 - 100,000 as secondary antibody.

Comment: Target Species of Antibody: Human

Restrictions: For Research Use only

Handling

Format: Lyophilized

Reconstitution: Distilled water

Concentration: Lot specific

Buffer: Lyophilized from PBS with 2 % sucrose

Handling Advice: Avoid repeat freeze-thaw cycles.

Storage: 4 °C, -20 °C

Storage Comment: Long term: -20°C, the use of 50% glycerol is recommended if storing aliquots in -20°C for long term use (up to 1 year)
Short term (less than 1 week): 4°C. Avoid freeze-thaw cycles.

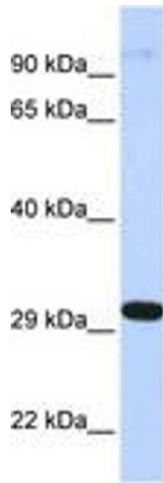


Image 1.