



[Go to Product page](#)

Datasheet for ABIN6742734
anti-PDX1 antibody (N-Term)

1 Image

Overview

Quantity:	100 µL
Target:	PDX1
Binding Specificity:	N-Term
Reactivity:	Human, Mouse, Rat, Dog, Horse, Rabbit, Cow, Pig, Hamster, Monkey
Host:	Rabbit
Clonality:	Polyclonal
Conjugate:	This PDX1 antibody is un-conjugated
Application:	Western Blotting (WB)

Product Details

Immunogen:	Synthetic peptide from N-Terminus of human PDX1 (P52945, NP_000200). Percent identity by BLAST analysis: Human, Chimpanzee, Gorilla, Gibbon, Monkey, Marmoset, Mouse, Rat, Hamster, Dog, Bovine, Rabbit, Horse, Pig (100%), Galago, Panda, Bat, Opossum (92%). Type of Immunogen: Synthetic peptide
Specificity:	Human PDX1
Predicted Reactivity:	Percent identity by BLAST analysis: Human, Mouse, Rat, Bovine, Rabbit, Pig (100%) Dog (92%).
Purification:	Immunoaffinity purified

Target Details

Target:	PDX1
---------	------

Target Details

Alternative Name:	PDX1 / PDX-1 (PDX1 Products)
Background:	Name/Gene ID: PDX1 Synonyms: PDX1, Glucose-sensitive factor, Insulin upstream factor 1, IPF1, Insulin promoter factor 1, IPF-1, IUF-1, STF-1, GSF, IDX-1, Islet/duodenum homeobox-1, IUF1, MODY4, PDX-1
Gene ID:	3651
NCBI Accession:	NP_000200
UniProt:	P52945
Pathways:	Nuclear Receptor Transcription Pathway , Positive Regulation of Peptide Hormone Secretion , Steroid Hormone Mediated Signaling Pathway , Hormone Transport , Carbohydrate Homeostasis , Chromatin Binding , Maintenance of Protein Location

Application Details

Application Notes:	Approved: WB (0.2 - 1 µg/mL) Usage: Western Blot: Suggested dilution at 1 µg/mL in 5 % skim milk / PBS buffer, and HRP conjugated anti-Rabbit IgG should be diluted in 1: 50,000 - 100,000 as secondary antibody. Not recommended for: IHC-P
Comment:	Target Species of Antibody: Human
Restrictions:	For Research Use only

Handling

Format:	Lyophilized
Reconstitution:	Distilled water
Concentration:	Lot specific
Buffer:	Lyophilized from PBS with 2 % sucrose
Handling Advice:	Avoid repeat freeze-thaw cycles.
Storage:	4 °C,-20 °C
Storage Comment:	Long term: -20°C, the use of 50% glycerol is recommended if storing aliquots in -20°C for long

Handling

term use (up to 1 year)

Short term (less than 1 week): 4°C. Avoid freeze-thaw cycles.

Images

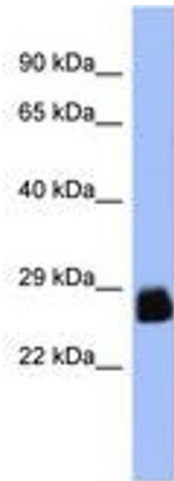


Image 1.