



[Go to Product page](#)

Datasheet for ABIN6742745
anti-DLX4 antibody (C-Term)

1 Image

Overview

Quantity:	100 µL
Target:	DLX4
Binding Specificity:	C-Term
Reactivity:	Human, Mouse, Rat, Pig, Monkey
Host:	Rabbit
Clonality:	Polyclonal
Conjugate:	This DLX4 antibody is un-conjugated
Application:	Western Blotting (WB)

Product Details

Immunogen:	Synthetic peptide from C-Terminus of human DLX4 (Q92988, NP_001925). Percent identity by BLAST analysis: Human, Chimpanzee, Gorilla, Orangutan, Gibbon, Monkey, Marmoset, Tamarin (100%), Galago, Elephant, Bovine, Bat, Rabbit, Guinea pig (92%), Pig (85%), Rat (84%), Mouse (78%). Type of Immunogen: Synthetic peptide
Specificity:	Human DLX4
Predicted Reactivity:	Percent identity by BLAST analysis: Human (100%) Bovine, Rabbit, Guinea pig (92%) Pig (85%) Rat (84%).
Purification:	Immunoaffinity purified

Target Details

Target:	DLX4
Alternative Name:	BP1 / DLX4 (DLX4 Products)
Background:	Name/Gene ID: DLX4 Synonyms: DLX4, Beta protein 1, BP1, DLX7, DLX8, DLX9, Distal-less homeo box 7, Distal-less homeo box 9, Distal-less homeobox 4, Homeobox protein DLX-7, Homeobox protein DLX-8, Homeobox protein DLX-4
Gene ID:	1748
NCBI Accession:	NP_001925
UniProt:	Q92988

Application Details

Application Notes:	Approved: WB (0.2 - 1 µg/mL) Usage: Western Blot: Suggested dilution at 1 µg/mL in 5 % skim milk / PBS buffer, and HRP conjugated anti-Rabbit IgG should be diluted in 1: 50,000 - 100,000 as secondary antibody.
Comment:	Target Species of Antibody: Human
Restrictions:	For Research Use only

Handling

Format:	Lyophilized
Reconstitution:	Distilled water
Concentration:	Lot specific
Buffer:	Lyophilized from PBS with 2 % sucrose
Handling Advice:	Avoid repeat freeze-thaw cycles.
Storage:	4 °C, -20 °C
Storage Comment:	Long term: -20°C, the use of 50% glycerol is recommended if storing aliquots in -20°C for long term use (up to 1 year) Short term (less than 1 week): 4°C. Avoid freeze-thaw cycles.

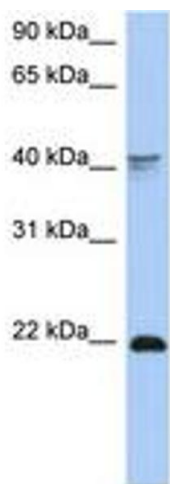


Image 1.