



[Go to Product page](#)

Datasheet for ABIN6742802
anti-PROP1 antibody (C-Term)

1 Image

Overview

Quantity:	100 µL
Target:	PROP1
Binding Specificity:	C-Term
Reactivity:	Human, Mouse, Dog, Horse, Pig
Host:	Rabbit
Clonality:	Polyclonal
Conjugate:	This PROP1 antibody is un-conjugated
Application:	Western Blotting (WB)

Product Details

Immunogen:	Synthetic peptide from C-Terminus of human PROP1 (O75360, NP_006252). Percent identity by BLAST analysis: Human, Chimpanzee, Gorilla, Dog, Horse, Pig (100%), Gibbon, Galago, Marmoset (92%), Rat, Sheep, Panda, Bovine, Bat, Chicken (90%), Elephant (81%), Mouse (78%). Type of Immunogen: Synthetic peptide
Specificity:	Human PROP1
Predicted Reactivity:	Percent identity by BLAST analysis: Human, Dog, Horse, Pig (100%) Rat, Sheep, Bovine, Chicken (90%).
Purification:	Immunoaffinity purified

Target Details

Target:	PROP1
Alternative Name:	PROP1 (PROP1 Products)
Background:	Name/Gene ID: PROP1 Synonyms: PROP1, CPHD2, PROP paired-like homeobox 1, PROP-1
Gene ID:	5626
NCBI Accession:	NP_006252

Application Details

Application Notes:	Approved: WB (0.2 - 1 µg/mL) Usage: Western Blot: Suggested dilution at 1 µg/mL in 5 % skim milk / PBS buffer, and HRP conjugated anti-Rabbit IgG should be diluted in 1: 50,000 - 100,000 as secondary antibody.
Comment:	Target Species of Antibody: Human
Restrictions:	For Research Use only

Handling

Format:	Lyophilized
Reconstitution:	Distilled water
Concentration:	Lot specific
Buffer:	Lyophilized from PBS with 2 % sucrose
Handling Advice:	Avoid repeat freeze-thaw cycles.
Storage:	4 °C,-20 °C
Storage Comment:	Long term: -20°C, the use of 50% glycerol is recommended if storing aliquots in -20°C for long term use (up to 1 year) Short term (less than 1 week): 4°C. Avoid freeze-thaw cycles.

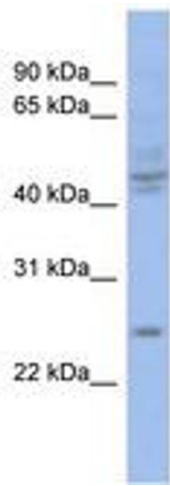


Image 1.