

Datasheet for ABIN6742807 anti-HIC1 antibody (AA 899-948)



[Go to Product page](#)

1 Image

Overview

Quantity:	100 µL
Target:	HIC1
Binding Specificity:	AA 899-948
Reactivity:	Human, Dog, Guinea Pig, Cow, Pig, Monkey, Horse, Bat
Host:	Rabbit
Clonality:	Polyclonal
Conjugate:	This HIC1 antibody is un-conjugated
Application:	Western Blotting (WB)

Product Details

Immunogen:	Synthetic peptide located between aa899-948 of human HIC1 (Q14526, NP_006488). Percent identity by BLAST analysis: Human, Chimpanzee, Gorilla, Monkey, Elephant, Dog, Bovine, Bat, Horse, Pig, Guinea pig (100%), Galago, Mouse, Opossum (92%). Type of Immunogen: Synthetic peptide
Specificity:	Human HIC1
Predicted Reactivity:	Percent identity by BLAST analysis: Human, Dog, Bovine, Horse, Pig, Guinea pig (100%) Mouse (92%).
Purification:	Immunoaffinity purified

Target Details

Target:	HIC1
Alternative Name:	HIC1 (HIC1 Products)
Background:	Name/Gene ID: HIC1 Synonyms: HIC1, Hic-1, ZNF901, Hypermethylated in cancer 1, ZBTB29
Gene ID:	3090
NCBI Accession:	NP_006488
UniProt:	Q14526
Pathways:	Positive Regulation of Response to DNA Damage Stimulus

Application Details

Application Notes:	Approved: WB (0.2 - 1 µg/mL) Usage: Western Blot: Suggested dilution at 1 µg/mL in 5 % skim milk / PBS buffer, and HRP conjugated anti-Rabbit IgG should be diluted in 1: 50,000 - 100,000 as secondary antibody.
Comment:	Target Species of Antibody: Human
Restrictions:	For Research Use only

Handling

Format:	Lyophilized
Reconstitution:	Distilled water
Concentration:	Lot specific
Buffer:	Lyophilized from PBS with 2 % sucrose
Handling Advice:	Avoid repeat freeze-thaw cycles.
Storage:	4 °C,-20 °C
Storage Comment:	Long term: -20°C, the use of 50% glycerol is recommended if storing aliquots in -20°C for long term use (up to 1 year) Short term (less than 1 week): 4°C. Avoid freeze-thaw cycles.

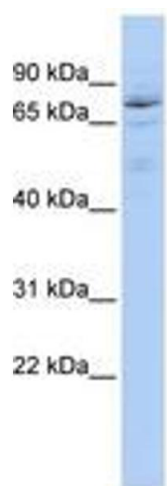


Image 1.