



Datasheet for ABIN6742829
anti-Arc antibody (N-Term)



[Go to Product page](#)

1 Image

Overview

Quantity:	100 µL
Target:	Arc
Binding Specificity:	N-Term
Reactivity:	Human, Rat, Mouse, Guinea Pig, Cow, Monkey, Chicken
Host:	Rabbit
Clonality:	Polyclonal
Conjugate:	This Arc antibody is un-conjugated
Application:	Western Blotting (WB)

Product Details

Immunogen:	Synthetic peptide from N-Terminus of human ARC (Q7LC44, NP_056008). Percent identity by BLAST analysis: Human, Chimpanzee, Gorilla, Monkey, Galago, Marmoset, Mouse, Rat, Bovine, Guinea pig, Turkey, Chicken (100%), Elephant, Opossum, Platypus (92%). Type of Immunogen: Synthetic peptide
Specificity:	Human ARC
Predicted Reactivity:	Percent identity by BLAST analysis: Human, Mouse, Rat, Bovine, Chicken (100%).
Purification:	Immunoaffinity purified

Target Details

Target:	Arc
---------	-----

Target Details

Alternative Name:	ARC / Arg3.1 (Arc Products)
Background:	Name/Gene ID: ARC Synonyms: ARC, KIAA0278, Arg3.1
Gene ID:	23237
NCBI Accession:	NP_056008
UniProt:	Q7LC44

Application Details

Application Notes:	Approved: WB (0.2 - 1 µg/mL) Usage: Western Blot: Suggested dilution at 1 µg/mL in 5 % skim milk / PBS buffer, and HRP conjugated anti-Rabbit IgG should be diluted in 1: 50,000 - 100,000 as secondary antibody.
Comment:	Target Species of Antibody: Human
Restrictions:	For Research Use only

Handling

Format:	Lyophilized
Reconstitution:	Distilled water
Concentration:	Lot specific
Buffer:	Lyophilized from PBS with 2 % sucrose
Handling Advice:	Avoid repeat freeze-thaw cycles.
Storage:	4 °C,-20 °C
Storage Comment:	Long term: -20°C, the use of 50% glycerol is recommended if storing aliquots in -20°C for long term use (up to 1 year) Short term (less than 1 week): 4°C. Avoid freeze-thaw cycles.

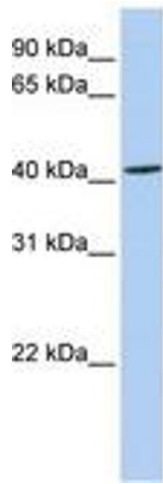


Image 1.