



[Go to Product page](#)

Datasheet for ABIN6742848  
**anti-ZNF302 antibody (N-Term)**

1 Image

Overview

Quantity:	100 µL
Target:	ZNF302
Binding Specificity:	N-Term
Reactivity:	Human, Mouse, Horse, Monkey
Host:	Rabbit
Clonality:	Polyclonal
Conjugate:	This ZNF302 antibody is un-conjugated
Application:	Western Blotting (WB)

Product Details

Immunogen:	Synthetic peptide from N-Terminus of human ZNF302 (Q9NR11-2, NP_060913). Percent identity by BLAST analysis: Human, Gorilla, Orangutan, Gibbon, Monkey, Horse (100%), Bovine (92%), Mouse (84%), Rat (83%).  Type of Immunogen: Synthetic peptide
Specificity:	Human ZNF302
Predicted Reactivity:	Percent identity by BLAST analysis: Human (100%).
Purification:	Immunoaffinity purified

Target Details

Target:	ZNF302
---------	--------

## Target Details

---

Alternative Name:	ZNF302 ( <a href="#">ZNF302 Products</a> )
Background:	Name/Gene ID: ZNF302 Family: Zinc Finger  Synonyms: ZNF302, MST154, HSD16, MSTP154, Zinc finger protein 302, Zinc finger protein 327, Zinc finger protein 135-like, Zinc finger protein 140-like, ZNF135L, ZNF140L, ZNF327
Gene ID:	55900
NCBI Accession:	<a href="#">NP_060913</a>
UniProt:	<a href="#">Q9NR11</a>

## Application Details

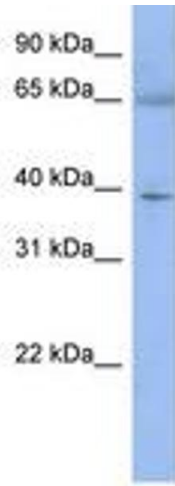
---

Application Notes:	Approved: WB (0.2 - 1 µg/mL)  Usage: Western Blot: Suggested dilution at 1 µg/mL in 5 % skim milk / PBS buffer, and HRP conjugated anti-Rabbit IgG should be diluted in 1: 50,000 - 100,000 as secondary antibody.
Comment:	Target Species of Antibody: Human
Restrictions:	For Research Use only

## Handling

---

Format:	Lyophilized
Reconstitution:	Distilled water
Concentration:	Lot specific
Buffer:	Lyophilized from PBS with 2 % sucrose
Handling Advice:	Avoid repeat freeze-thaw cycles.
Storage:	4 °C, -20 °C
Storage Comment:	Long term: -20°C, the use of 50% glycerol is recommended if storing aliquots in -20°C for long term use (up to 1 year) Short term (less than 1 week): 4°C. Avoid freeze-thaw cycles.



**Image 1.**