



[Go to Product page](#)

Datasheet for ABIN6742855  
**anti-BBX antibody (C-Term)**

1 Image

Overview

Quantity:	100 µL
Target:	BBX
Binding Specificity:	C-Term
Reactivity:	Human, Mouse, Dog, Rabbit, Guinea Pig, Cow, Horse, Pig, Monkey, Bat
Host:	Rabbit
Clonality:	Polyclonal
Conjugate:	This BBX antibody is un-conjugated
Application:	Western Blotting (WB)

Product Details

Immunogen:	Synthetic peptide from C-Terminus of human BBX (Q8WY36-2, NP_064620). Percent identity by BLAST analysis: Human, Chimpanzee, Gorilla, Gibbon, Monkey, Galago, Marmoset, Mouse, Panda, Dog, Bovine, Bat, Rabbit, Horse, Pig, Guinea pig (100%), Rat, Elephant (92%), Opossum (85%).  Type of Immunogen: Synthetic peptide
Specificity:	Human BBX / HBP2
Predicted Reactivity:	Percent identity by BLAST analysis: Human, Mouse, Dog, Bovine, Rabbit, Horse (100%) Rat (92%).
Purification:	Immunoaffinity purified

## Target Details

---

Target:	BBX
Alternative Name:	BBX ( <a href="#">BBX Products</a> )
Background:	Name/Gene ID: BBX  Synonyms: BBX, Bobby sox homolog, HSPC339, HMG box-containing protein 2, MDS001, X 001 protein, Bobby sox homolog (Drosophila), HBP2
Gene ID:	56987
NCBI Accession:	<a href="#">NP_064620</a>
UniProt:	<a href="#">Q8WY36</a>

## Application Details

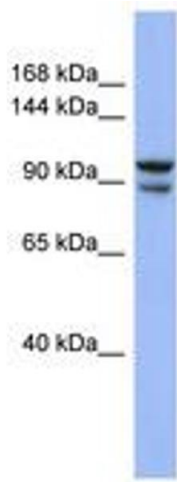
---

Application Notes:	Approved: WB (0.2 - 1 µg/mL)  Usage: Western Blot: Suggested dilution at 1 µg/mL in 5 % skim milk / PBS buffer, and HRP conjugated anti-Rabbit IgG should be diluted in 1: 50,000 - 100,000 as secondary antibody.
Comment:	Target Species of Antibody: Human
Restrictions:	For Research Use only

## Handling

---

Format:	Lyophilized
Reconstitution:	Distilled water
Concentration:	Lot specific
Buffer:	Lyophilized from PBS with 2 % sucrose
Handling Advice:	Avoid repeat freeze-thaw cycles.
Storage:	4 °C, -20 °C
Storage Comment:	Long term: -20°C, the use of 50% glycerol is recommended if storing aliquots in -20°C for long term use (up to 1 year)  Short term (less than 1 week): 4°C. Avoid freeze-thaw cycles.



**Image 1.**