



[Go to Product page](#)

Datasheet for ABIN6742891

## anti-MRPS15 antibody (AA 35-84)

### 1 Image

#### Overview

|                      |                                       |
|----------------------|---------------------------------------|
| Quantity:            | 100 µL                                |
| Target:              | MRPS15                                |
| Binding Specificity: | AA 35-84                              |
| Reactivity:          | Human                                 |
| Host:                | Rabbit                                |
| Clonality:           | Polyclonal                            |
| Conjugate:           | This MRPS15 antibody is un-conjugated |
| Application:         | Western Blotting (WB)                 |

#### Product Details

|                       |   |
|-----------------------|---|
| Immunogen:            | Synthetic peptide located between aa35-84 of human MRPS15 (P82914, NP_112570). Percent identity by BLAST analysis: Human (100%), Gorilla (85%).<br><br>Type of Immunogen: Synthetic peptide |
| Specificity:          | Human MRPS15  |
| Predicted Reactivity: | Percent identity by BLAST analysis: Human (100%).   |
| Purification:         | Immunoaffinity purified   |

#### Target Details

|                   |  |
|-------------------|--|
| Target:           | MRPS15                                     |
| Alternative Name: | MRPS15 ( <a href="#">MRPS15 Products</a> ) |

## Target Details

---

|                 |   |
|-----------------|---|
| Background:     | Name/Gene ID: MRPS15<br><br>Synonyms: MRPS15, DC37, RPMS15, S15mt, MPR-S15, MRP-S15 |
| Gene ID:        | 64960   |
| NCBI Accession: | <a href="#">NP_112570</a>   |
| UniProt:        | <a href="#">P82914</a>  |

## Application Details

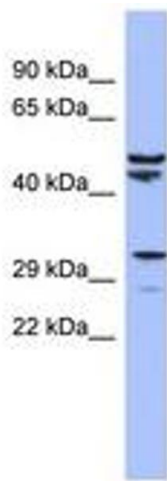
---

|                    |  |
|--------------------|--|
| Application Notes: | Approved: WB (0.2 - 1 µg/mL)<br><br>Usage: Western Blot: Suggested dilution at 1 µg/mL in 5 % skim milk / PBS buffer, and HRP conjugated anti-Rabbit IgG should be diluted in 1: 50,000 - 100,000 as secondary antibody. |
| Comment:           | Target Species of Antibody: Human  |
| Restrictions:      | For Research Use only  |

## Handling

---

|                  |   |
|------------------|---|
| Format:          | Lyophilized   |
| Reconstitution:  | Distilled water   |
| Concentration:   | Lot specific  |
| Buffer:          | Lyophilized from PBS with 2 % sucrose   |
| Handling Advice: | Avoid repeat freeze-thaw cycles.  |
| Storage:         | 4 °C, -20 °C  |
| Storage Comment: | Long term: -20°C, the use of 50% glycerol is recommended if storing aliquots in -20°C for long term use (up to 1 year)<br>Short term (less than 1 week): 4°C. Avoid freeze-thaw cycles. |



**Image 1.**