



[Go to Product page](#)

Datasheet for ABIN6742894
anti-OTP antibody (N-Term)

1 Image

Overview

Quantity:	100 µL
Target:	OTP
Binding Specificity:	N-Term
Reactivity:	Human, Mouse, Rat, Dog, Cow, Guinea Pig, Zebrafish (Danio rerio), Horse, Rabbit, Monkey, Pig, Xenopus laevis, Bat
Host:	Rabbit
Clonality:	Polyclonal
Conjugate:	This OTP antibody is un-conjugated
Application:	Western Blotting (WB)

Product Details

Immunogen:	Synthetic peptide from N-Terminus of human OTP (Q5XKR4, NP_115485). Percent identity by BLAST analysis: Human, Chimpanzee, Gorilla, Gibbon, Monkey, Galago, Marmoset, Mouse, Rat, Elephant, Panda, Dog, Bovine, Bat, Rabbit, Horse, Pig, Opossum, Guinea pig, Xenopus (100%), Salmon, Stickleback, Zebrafish (86%). Type of Immunogen: Synthetic peptide
Specificity:	Human OTP
Predicted Reactivity:	Percent identity by BLAST analysis: Human, Mouse, Rat, Dog, Bovine, Rabbit, Horse, Guinea pig (100%) Zebrafish (86%).
Purification:	Immunoaffinity purified

Target Details

Target:	OTP
Alternative Name:	OTP (OTP Products)
Background:	Name/Gene ID: OTP Synonyms: OTP, Homeobox protein orthopedia, Orthopedia homeobox, Orthopedia homolog
Gene ID:	23440
NCBI Accession:	NP_115485
UniProt:	Q5XKR4

Application Details

Application Notes:	Approved: WB (0.2 - 1 µg/mL) Usage: Western Blot: Suggested dilution at 1 µg/mL in 5 % skim milk / PBS buffer, and HRP conjugated anti-Rabbit IgG should be diluted in 1: 50,000 - 100,000 as secondary antibody.
Comment:	Target Species of Antibody: Human
Restrictions:	For Research Use only

Handling

Format:	Lyophilized
Reconstitution:	Distilled water
Concentration:	Lot specific
Buffer:	Lyophilized from PBS with 2 % sucrose
Handling Advice:	Avoid repeat freeze-thaw cycles.
Storage:	4 °C, -20 °C
Storage Comment:	Long term: -20°C, the use of 50% glycerol is recommended if storing aliquots in -20°C for long term use (up to 1 year) Short term (less than 1 week): 4°C. Avoid freeze-thaw cycles.

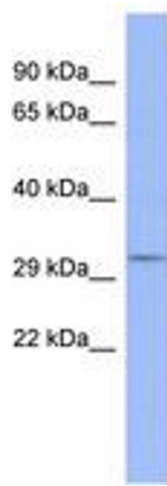


Image 1.