



[Go to Product page](#)

Datasheet for ABIN6742934  
**anti-OLIG3 antibody (N-Term)**

1 Image

Overview

Quantity:	100 µL
Target:	OLIG3
Binding Specificity:	N-Term
Reactivity:	Human, Mouse, Rat, Dog, Cow, Guinea Pig, Horse, Bat, Chicken, Hamster, Monkey, Pig
Host:	Rabbit
Clonality:	Polyclonal
Conjugate:	This OLIG3 antibody is un-conjugated
Application:	Western Blotting (WB)

Product Details

Immunogen:	Synthetic peptide from N-Terminus of human OLIG3 (Q7RTU3, NP_786923). Percent identity by BLAST analysis: Human, Chimpanzee, Gorilla, Gibbon, Monkey, Galago, Mouse, Rat, Hamster, Elephant, Panda, Dog, Bovine, Bat, Horse, Pig, Opossum, Guinea pig, Zebra finch, Chicken, Platypus (100%).  Type of Immunogen: Synthetic peptide
Specificity:	Human OLIG3
Predicted Reactivity:	Percent identity by BLAST analysis: Human, Mouse, Rat, Dog, Bovine, Horse (100%).
Purification:	Immunoaffinity purified

## Target Details

---

Target:	OLIG3
Alternative Name:	OLIG3 ( <a href="#">OLIG3 Products</a> )
Background:	Name/Gene ID: OLIG3  Synonyms: OLIG3, Bhlhb7, BHLHe20, Oligo3
Gene ID:	167826
NCBI Accession:	<a href="#">NP_786923</a>
UniProt:	<a href="#">Q7RTU3</a>

## Application Details

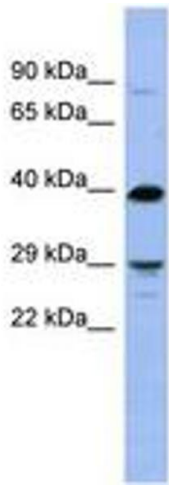
---

Application Notes:	Approved: WB (0.2 - 1 µg/mL)  Usage: Western Blot: Suggested dilution at 1 µg/mL in 5 % skim milk / PBS buffer, and HRP conjugated anti-Rabbit IgG should be diluted in 1: 50,000 - 100,000 as secondary antibody.
Comment:	Target Species of Antibody: Human
Restrictions:	For Research Use only

## Handling

---

Format:	Lyophilized
Reconstitution:	Distilled water
Concentration:	Lot specific
Buffer:	Lyophilized from PBS with 2 % sucrose
Handling Advice:	Avoid repeat freeze-thaw cycles.
Storage:	4 °C, -20 °C
Storage Comment:	Long term: -20°C, the use of 50% glycerol is recommended if storing aliquots in -20°C for long term use (up to 1 year)  Short term (less than 1 week): 4°C. Avoid freeze-thaw cycles.



**Image 1.**