



[Go to Product page](#)

Datasheet for ABIN6742936  
**anti-DLX1 antibody (N-Term)**

1 Image

Overview

Quantity:	100 µL
Target:	DLX1
Binding Specificity:	N-Term
Reactivity:	Human, Mouse, Rat, Guinea Pig, Horse, Dog, Rabbit, Cow, Zebrafish (Danio rerio), Monkey, Pig, Chicken, Bat, Hamster
Host:	Rabbit
Clonality:	Polyclonal
Conjugate:	This DLX1 antibody is un-conjugated
Application:	Western Blotting (WB)

Product Details

Immunogen:	Synthetic peptide from N-Terminus of human DLX1 (P56177, NP_835221). Percent identity by BLAST analysis: Human, Chimpanzee, Gorilla, Gibbon, Monkey, Galago, Marmoset, Mouse, Rat, Hamster, Elephant, Panda, Dog, Bovine, Bat, Rabbit, Horse, Pig, Opossum, Guinea pig, Zebra finch, Chicken, Platypus (100%), Xenopus, Stickleback (92%), Zebrafish (85%).  Type of Immunogen: Synthetic peptide
Specificity:	Human DLX1
Predicted Reactivity:	Percent identity by BLAST analysis: Human, Mouse, Rat, Dog, Bovine, Guinea pig, Chicken (100%) Zebrafish (85%).
Purification:	Immunoaffinity purified

## Target Details

---

Target:	DLX1
Alternative Name:	DLX1 ( <a href="#">DLX1 Products</a> )
Background:	Name/Gene ID: DLX1  Synonyms: DLX1, Distal-less homeo box 1, Homeobox protein DLX-1, Distal-less homeobox 1
Gene ID:	1745
NCBI Accession:	<a href="#">NP_835221</a>
UniProt:	<a href="#">Q64317</a>

## Application Details

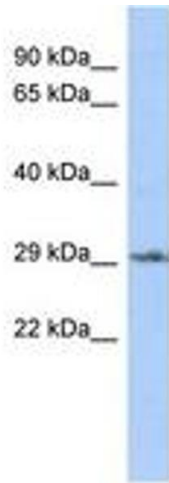
---

Application Notes:	Approved: WB (0.2 - 1 µg/mL)  Usage: Western Blot: Suggested dilution at 1 µg/mL in 5 % skim milk / PBS buffer, and HRP conjugated anti-Rabbit IgG should be diluted in 1: 50,000 - 100,000 as secondary antibody.
Comment:	Target Species of Antibody: Human
Restrictions:	For Research Use only

## Handling

---

Format:	Lyophilized
Reconstitution:	Distilled water
Concentration:	Lot specific
Buffer:	Lyophilized from PBS with 2 % sucrose
Handling Advice:	Avoid repeat freeze-thaw cycles.
Storage:	4 °C, -20 °C
Storage Comment:	Long term: -20°C, the use of 50% glycerol is recommended if storing aliquots in -20°C for long term use (up to 1 year)  Short term (less than 1 week): 4°C. Avoid freeze-thaw cycles.



**Image 1.**