



[Go to Product page](#)

Datasheet for ABIN6742942
anti-ZSCAN2 antibody (C-Term)

1 Image

Overview

Quantity:	100 µL
Target:	ZSCAN2
Binding Specificity:	C-Term
Reactivity:	Human, Dog, Rat, Cow, Pig, Guinea Pig, Horse, Rabbit, Monkey, Bat
Host:	Rabbit
Clonality:	Polyclonal
Conjugate:	This ZSCAN2 antibody is un-conjugated
Application:	Western Blotting (WB)

Product Details

Immunogen:	Synthetic peptide from C-Terminus of human ZSCAN2 (Q7Z7L9, NP_870992). Percent identity by BLAST analysis: Human, Chimpanzee, Gorilla, Orangutan, Gibbon, Monkey, Galago, Marmoset, Elephant, Panda, Dog, Bovine, Bat, Horse, Pig, Opossum, Guinea pig (100%), Mouse (92%), Rabbit (85%), Rat (78%). Type of Immunogen: Synthetic peptide
Specificity:	Human ZSCAN2
Predicted Reactivity:	Percent identity by BLAST analysis: Human, Dog, Horse, Guinea pig (100%) Bovine (92%) Rabbit (85%).
Purification:	Immunoaffinity purified

Target Details

Target:	ZSCAN2
Alternative Name:	ZSCAN2 (ZSCAN2 Products)
Background:	Name/Gene ID: ZSCAN2 Synonyms: ZSCAN2, Zfp-29, Zinc finger protein 29, ZNF854, ZFP29, Zinc finger protein 29 homolog, Zinc finger protein 854
Gene ID:	54993
NCBI Accession:	NP_870992
UniProt:	Q7Z7L9

Application Details

Application Notes:	Approved: WB (0.2 - 1 µg/mL) Usage: Western Blot: Suggested dilution at 1 µg/mL in 5 % skim milk / PBS buffer, and HRP conjugated anti-Rabbit IgG should be diluted in 1: 50,000 - 100,000 as secondary antibody.
Comment:	Target Species of Antibody: Human
Restrictions:	For Research Use only

Handling

Format:	Lyophilized
Reconstitution:	Distilled water
Concentration:	Lot specific
Buffer:	Lyophilized from PBS with 2 % sucrose
Handling Advice:	Avoid repeat freeze-thaw cycles.
Storage:	4 °C, -20 °C
Storage Comment:	Long term: -20°C, the use of 50% glycerol is recommended if storing aliquots in -20°C for long term use (up to 1 year) Short term (less than 1 week): 4°C. Avoid freeze-thaw cycles.

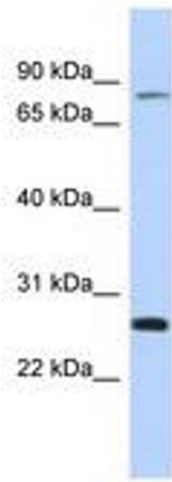


Image 1.