



[Go to Product page](#)

Datasheet for ABIN6742953
anti-TUBA4A antibody (AA 143-192)

1 Image

Overview

Quantity:	100 µL
Target:	TUBA4A
Binding Specificity:	AA 143-192
Reactivity:	Human, Mouse, Rat, Cow, Guinea Pig, Monkey, Pig, Chicken, Hamster, Xenopus laevis, Zebrafish (Danio rerio), Drosophila melanogaster
Host:	Rabbit
Clonality:	Polyclonal
Conjugate:	This TUBA4A antibody is un-conjugated
Application:	Western Blotting (WB)

Product Details

Immunogen:	Synthetic peptide located between aa143-192 of human TUBA4A (P68366, NP_005991). Percent identity by BLAST analysis: Human, Chimpanzee, Monkey, Galago, Mouse, Rat, Hamster, Elephant, Bovine, Pig, Guinea pig, Turkey, Zebra finch, Chicken, Xenopus, Frog, Trout, Salmon, Smelt, Sablefish, Pike, Zebrafish, Drosophila, Nematode (100%). Type of Immunogen: Synthetic peptide
Specificity:	Human TUBA4A
Predicted Reactivity:	Percent identity by BLAST analysis: Guinea pig, Chicken (100%).
Purification:	Immunoaffinity purified

Target Details

Target:	TUBA4A
Alternative Name:	TUBA4A / TUBA1 (TUBA4A Products)
Background:	Name/Gene ID: TUBA4A Synonyms: TUBA4A, Alpha-tubulin 1, TUBA1, Testis-specific alpha-tubulin, Tubulin, alpha 4a, H2-ALPHA, Tubulin alpha-1 chain, Tubulin alpha-4 chain, Tubulin alpha-4A chain, Tubulin H2-alpha, Tubulin, alpha 1
Gene ID:	7277
NCBI Accession:	NP_005991
UniProt:	P68366
Pathways:	Microtubule Dynamics , M Phase

Application Details

Application Notes:	Approved: WB (0.2 - 1 µg/mL) Usage: Western Blot: Suggested dilution at 1 µg/mL in 5 % skim milk / PBS buffer, and HRP conjugated anti-Rabbit IgG should be diluted in 1: 50,000 - 100,000 as secondary antibody.
Comment:	Target Species of Antibody: Human
Restrictions:	For Research Use only

Handling

Format:	Lyophilized
Reconstitution:	Distilled water
Concentration:	Lot specific
Buffer:	Lyophilized from PBS with 2 % sucrose
Handling Advice:	Avoid repeat freeze-thaw cycles.
Storage:	4 °C, -20 °C
Storage Comment:	Long term: -20°C, the use of 50% glycerol is recommended if storing aliquots in -20°C for long term use (up to 1 year) Short term (less than 1 week): 4°C. Avoid freeze-thaw cycles.

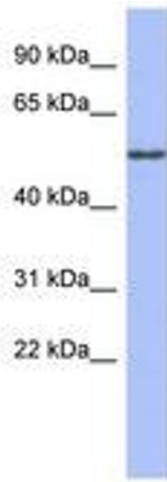


Image 1.