

Datasheet for ABIN6742954
anti-GAPDHS antibody (AA 107-156)[Go to Product page](#)

1 Image

Overview

Quantity:	100 µL
Target:	GAPDHS
Binding Specificity:	AA 107-156
Reactivity:	Human, Mouse, Pig, Monkey, Rabbit, Guinea Pig, Horse
Host:	Rabbit
Clonality:	Polyclonal
Conjugate:	This GAPDHS antibody is un-conjugated
Application:	Western Blotting (WB)

Product Details

Immunogen:	Synthetic peptide located between aa107-156 of human GAPDHS (O14556, NP_055179). Percent identity by BLAST analysis: Human, Chimpanzee, Gorilla, Gibbon, Monkey, Marmoset (100%), Dog (92%), Elephant, Horse (84%), Mouse (78%). Type of Immunogen: Synthetic peptide
Specificity:	Human GAPDHS
Predicted Reactivity:	Percent identity by BLAST analysis: Dog (92%) Horse (84%).
Purification:	Immunoaffinity purified

Target Details

Target:	GAPDHS
---------	--------

Target Details

Alternative Name:	GAPDHS / GAPDS (GAPDHS Products)
Background:	Name/Gene ID: GAPDHS Synonyms: GAPDHS, GAPD2, GAPDH2, GAPDS, GAPDH-2, HSD-35
Gene ID:	26330
NCBI Accession:	NP_055179
UniProt:	O14556
Pathways:	Regulation of Carbohydrate Metabolic Process

Application Details

Application Notes:	Approved: WB (0.2 - 1 µg/mL) Usage: Western Blot: Suggested dilution at 1 µg/mL in 5 % skim milk / PBS buffer, and HRP conjugated anti-Rabbit IgG should be diluted in 1: 50,000 - 100,000 as secondary antibody.
Comment:	Target Species of Antibody: Human
Restrictions:	For Research Use only

Handling

Format:	Lyophilized
Reconstitution:	Distilled water
Concentration:	Lot specific
Buffer:	Lyophilized from PBS with 2 % sucrose
Handling Advice:	Avoid repeat freeze-thaw cycles.
Storage:	4 °C, -20 °C
Storage Comment:	Long term: -20°C, the use of 50% glycerol is recommended if storing aliquots in -20°C for long term use (up to 1 year) Short term (less than 1 week): 4°C. Avoid freeze-thaw cycles.

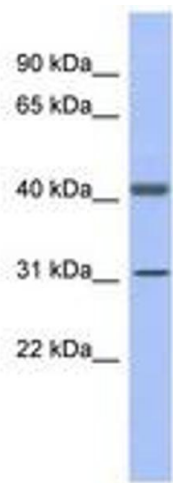


Image 1.