



[Go to Product page](#)

Datasheet for ABIN6742962

anti-PABPC1L2A antibody (C-Term)

1 Image

Overview

Quantity:	100 µL
Target:	PABPC1L2A
Binding Specificity:	C-Term
Reactivity:	Human, Rabbit, Cow, Horse, Pig, Monkey
Host:	Rabbit
Clonality:	Polyclonal
Conjugate:	This PABPC1L2A antibody is un-conjugated
Application:	Western Blotting (WB)

Product Details

Immunogen:	Synthetic peptide from C-Terminus of human PABPC1L2A (Q5JQF8, NP_001012995). Percent identity by BLAST analysis: Human, Chimpanzee, Gorilla, Gibbon, Monkey, Panda, Bovine, Rabbit, Horse, Pig (100%), Guinea pig (92%), Drosophila (90%). Type of Immunogen: Synthetic peptide
Specificity:	Human PABPC1L2A
Predicted Reactivity:	Percent identity by BLAST analysis: Bovine (100%).
Purification:	Immunoaffinity purified

Target Details

Target:	PABPC1L2A
---------	-----------

Target Details

Alternative Name:	PABPC1L2A (PABPC1L2A Products)
Background:	Name/Gene ID: PABPC1L2A Synonyms: PABPC1L2A, RBM32B, RBM32A, RNA binding motif protein 32A, RNA-binding motif protein 32, RNA-binding protein 32, RP11-493K23.3, PABPC1L2
Gene ID:	340529
NCBI Accession:	NP_001012995
UniProt:	Q5JQF8

Application Details

Application Notes:	Approved: WB (0.2 - 1 µg/mL) Usage: Western Blot: Suggested dilution at 1 µg/mL in 5 % skim milk / PBS buffer, and HRP conjugated anti-Rabbit IgG should be diluted in 1: 50,000 - 100,000 as secondary antibody.
Comment:	Target Species of Antibody: Human
Restrictions:	For Research Use only

Handling

Format:	Lyophilized
Reconstitution:	Distilled water
Concentration:	Lot specific
Buffer:	Lyophilized from PBS with 2 % sucrose
Handling Advice:	Avoid repeat freeze-thaw cycles.
Storage:	4 °C, -20 °C
Storage Comment:	Long term: -20°C, the use of 50% glycerol is recommended if storing aliquots in -20°C for long term use (up to 1 year) Short term (less than 1 week): 4°C. Avoid freeze-thaw cycles.

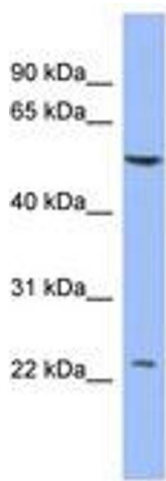


Image 1.