

Datasheet for ABIN6742964 anti-RPS24 antibody (AA 71-120)



[Go to Product page](#)

1 Image

Overview

Quantity:	100 µL
Target:	RPS24
Binding Specificity:	AA 71-120
Reactivity:	Human, Mouse, Rat, Rabbit, Cow, Dog, Guinea Pig, Horse, Chicken, Hamster, Monkey, Pig, Xenopus laevis
Host:	Rabbit
Clonality:	Polyclonal
Conjugate:	This RPS24 antibody is un-conjugated
Application:	Western Blotting (WB)

Product Details

Immunogen:	Synthetic peptide located between aa71-120 of human RPS24 (P62847, NP_001017). Percent identity by BLAST analysis: Human, Chimpanzee, Orangutan, Gibbon, Monkey, Galago, Marmoset, Mouse, Rat, Hamster, Elephant, Panda, Dog, Bovine, Rabbit, Horse, Pig, Opossum, Guinea pig, Turkey, Chicken, Armadillo, Platypus, Xenopus, Trout, Salmon, Stickleback, Medaka, Pike, Pufferfish (100%), Catfish, Zebrafish (92%). Type of Immunogen: Synthetic peptide
Specificity:	Human RPS24
Predicted Reactivity:	Percent identity by BLAST analysis: Human, Mouse, Rat, Dog, Rabbit, Pig, Chicken (100%) Zebrafish (92%).

Product Details

Purification: Immunoaffinity purified

Target Details

Target: RPS24

Alternative Name: RPS24 ([RPS24 Products](#))

Background: Name/Gene ID: RPS24

Synonyms: RPS24, 40S ribosomal protein S24, DBA3, S24, Ribosomal protein S24

Gene ID: 6229

NCBI Accession: [NP_001017](#)

UniProt: [P62847](#)

Application Details

Application Notes: Approved: WB (0.2 - 1 µg/mL)

Usage: Western Blot: Suggested dilution at 1 µg/mL in 5 % skim milk / PBS buffer, and HRP conjugated anti-Rabbit IgG should be diluted in 1: 50,000 - 100,000 as secondary antibody.

Comment: Target Species of Antibody: Human

Restrictions: For Research Use only

Handling

Format: Lyophilized

Reconstitution: Distilled water

Concentration: Lot specific

Buffer: Lyophilized from PBS with 2 % sucrose

Handling Advice: Avoid repeat freeze-thaw cycles.

Storage: 4 °C, -20 °C

Storage Comment: Long term: -20°C, the use of 50% glycerol is recommended if storing aliquots in -20°C for long term use (up to 1 year)

Short term (less than 1 week): 4°C. Avoid freeze-thaw cycles.

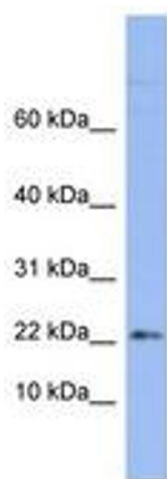


Image 1.