



[Go to Product page](#)

Datasheet for ABIN6742979

## anti-SNRPB antibody (AA 35-84)

### 1 Image

#### Overview

Quantity:	100 µL
Target:	SNRPB
Binding Specificity:	AA 35-84
Reactivity:	Human, Mouse, Rat, Rabbit, Cow, Dog, Guinea Pig, Horse, Bat, Monkey, Pig
Host:	Rabbit
Clonality:	Polyclonal
Conjugate:	This SNRPB antibody is un-conjugated
Application:	Western Blotting (WB)

#### Product Details

Immunogen:	Synthetic peptide located between aa35-84 of human SNRPB (Q66K91, NP_003082). Percent identity by BLAST analysis: Human, Chimpanzee, Gorilla, Gibbon, Monkey, Galago, Marmoset, Mouse, Rat, Elephant, Panda, Dog, Bovine, Bat, Rabbit, Horse, Pig, Opossum, Guinea pig (100%), Turkey, Zebra finch, Chicken, Xenopus, Salmon, Stickleback, Zebrafish (92%), Orangutan (85%).  Type of Immunogen: Synthetic peptide
Specificity:	Human SNRPB
Predicted Reactivity:	Percent identity by BLAST analysis: Human, Mouse, Rat, Dog, Bovine, Guinea pig (100%) Xenopus, Zebrafish (92%).
Purification:	Immunoaffinity purified

## Target Details

---

Target:	SNRPB
Alternative Name:	SNRPB / COD ( <a href="#">SNRPB Products</a> )
Background:	Name/Gene ID: SNRPB  Synonyms: SNRPB, B polypeptide of Sm protein, COD, Sm protein B/B, SnRNP-B, Sm-B/B, Sm-B/B', Sm-B/Sm-B, SmB/B, SmB/SmB, SNRPB1, SmB/B', SmB/SmB'
Gene ID:	6628
NCBI Accession:	<a href="#">NP_003082</a>
UniProt:	<a href="#">P14678</a>
Pathways:	<a href="#">Ribonucleoprotein Complex Subunit Organization</a>

## Application Details

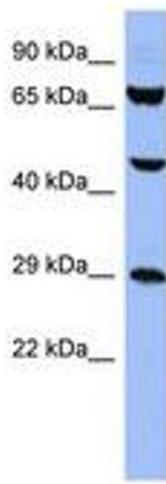
---

Application Notes:	Approved: WB (0.2 - 1 µg/mL)  Usage: Western Blot: Suggested dilution at 1 µg/mL in 5 % skim milk / PBS buffer, and HRP conjugated anti-Rabbit IgG should be diluted in 1: 50,000 - 100,000 as secondary antibody.
Comment:	Target Species of Antibody: Human
Restrictions:	For Research Use only

## Handling

---

Format:	Lyophilized
Reconstitution:	Distilled water
Concentration:	Lot specific
Buffer:	Lyophilized from PBS with 2 % sucrose
Handling Advice:	Avoid repeat freeze-thaw cycles.
Storage:	4 °C,-20 °C
Storage Comment:	Long term: -20°C, the use of 50% glycerol is recommended if storing aliquots in -20°C for long term use (up to 1 year)  Short term (less than 1 week): 4°C. Avoid freeze-thaw cycles.



**Image 1.**