



[Go to Product page](#)

Datasheet for ABIN6743003
anti-SF3B1 antibody (AA 287-336)

1 Image

Overview

| | |
|----------------------|---|
| Quantity: | 100 µL |
| Target: | SF3B1 |
| Binding Specificity: | AA 287-336 |
| Reactivity: | Human, Mouse, Rat, Cow, Guinea Pig, Horse, Goat, Rabbit, Pig, Xenopus laevis, Chicken, Hamster, Monkey, Bat |
| Host: | Rabbit |
| Clonality: | Polyclonal |
| Conjugate: | This SF3B1 antibody is un-conjugated |
| Application: | Western Blotting (WB) |

Product Details

| | |
|-----------------------|--|
| Immunogen: | Synthetic peptide located between aa287-336 of human SF3B1 (O75533, NP_036565). Percent identity by BLAST analysis: Human, Chimpanzee, Gibbon, Monkey, Galago, Marmoset, Mouse, Rat, Goat, Hamster, Elephant, Bovine, Bat, Rabbit, Horse, Pig, Opossum, Guinea pig, Turkey, Zebra finch, Chicken, Xenopus (100%), Dog (93%), Stickleback, Zebrafish (92%), Drosophila (91%). Type of Immunogen: Synthetic peptide |
| Specificity: | Human SF3B1 |
| Predicted Reactivity: | Percent identity by BLAST analysis: Human, Mouse, Rat, Bovine, Goat, Rabbit, Horse, Pig, Guinea pig, Chicken, Xenopus (100%) Dog (93%) Zebrafish (92%). |

Product Details

Purification: Immunoaffinity purified

Target Details

Target: SF3B1

Alternative Name: SF3B1 ([SF3B1 Products](#))

Background: Name/Gene ID: SF3B1

Synonyms: SF3B1, Hsh155, MDS, PRP10, PRPF10, SAP 155, Splicing factor 3B subunit 1, SAP155, SF3b155

Gene ID: 23451

NCBI Accession: [NP_036565](#)

UniProt: [O75533](#)

Pathways: [Chromatin Binding](#)

Application Details

Application Notes: Approved: WB (0.2 - 1 µg/mL)

Usage: Western Blot: Suggested dilution at 1 µg/mL in 5 % skim milk / PBS buffer, and HRP conjugated anti-Rabbit IgG should be diluted in 1: 50,000 - 100,000 as secondary antibody.

Comment: Target Species of Antibody: Human

Restrictions: For Research Use only

Handling

Format: Lyophilized

Reconstitution: Distilled water

Concentration: Lot specific

Buffer: Lyophilized from PBS with 2 % sucrose

Handling Advice: Avoid repeat freeze-thaw cycles.

Storage: 4 °C, -20 °C

Storage Comment: Long term: -20°C, the use of 50% glycerol is recommended if storing aliquots in -20°C for long

Handling

term use (up to 1 year)

Short term (less than 1 week): 4°C. Avoid freeze-thaw cycles.

Images

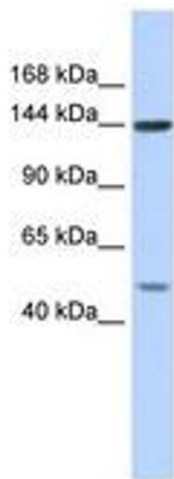


Image 1.