



[Go to Product page](#)

Datasheet for ABIN6743006
anti-MCTS1 antibody (N-Term)

1 Image

Overview

Quantity:	100 µL
Target:	MCTS1
Binding Specificity:	N-Term
Reactivity:	Human, Rat, Cow, Dog, Guinea Pig, Pig, Zebrafish (Danio rerio), Monkey
Host:	Rabbit
Clonality:	Polyclonal
Conjugate:	This MCTS1 antibody is un-conjugated
Application:	Western Blotting (WB)

Product Details

Immunogen:	Synthetic peptide from N-Terminus of human MCTS1 (Q9ULC4, NP_054779). Percent identity by BLAST analysis: Human, Chimpanzee, Gorilla, Gibbon, Marmoset, Rat, Panda, Dog, Bovine, Pig, Guinea pig (100%), Mouse, Elephant, Bat, Rabbit, Turkey, Zebra finch, Chicken, Platypus, Xenopus, Frog, Sablefish (92%), Opossum (91%), Trout, Catfish, Salmon, Smelt, Zebrafish (85%). Type of Immunogen: Synthetic peptide
Specificity:	Human MCTS1 / MCT1
Predicted Reactivity:	Percent identity by BLAST analysis: Human, Dog, Bovine (100%) Mouse, Rat, Chicken (92%) Zebrafish (85%).
Purification:	Immunoaffinity purified

Target Details

Target:	MCTS1
Alternative Name:	MCT1 (MCTS1 Products)
Background:	Name/Gene ID: MCTS1 Synonyms: MCTS1, MCT1, MCT-1
Gene ID:	28985
NCBI Accession:	NP_054779
UniProt:	Q9ULC4

Application Details

Application Notes:	Approved: WB (0.2 - 1 µg/mL) Usage: Western Blot: Suggested dilution at 1 µg/mL in 5 % skim milk / PBS buffer, and HRP conjugated anti-Rabbit IgG should be diluted in 1: 50,000 - 100,000 as secondary antibody. Not recommended for: IHC-P
Comment:	Target Species of Antibody: Human
Restrictions:	For Research Use only

Handling

Format:	Lyophilized
Reconstitution:	Distilled water
Concentration:	Lot specific
Buffer:	Lyophilized from PBS with 2 % sucrose
Handling Advice:	Avoid repeat freeze-thaw cycles.
Storage:	4 °C, -20 °C
Storage Comment:	Long term: -20°C, the use of 50% glycerol is recommended if storing aliquots in -20°C for long term use (up to 1 year) Short term (less than 1 week): 4°C. Avoid freeze-thaw cycles.

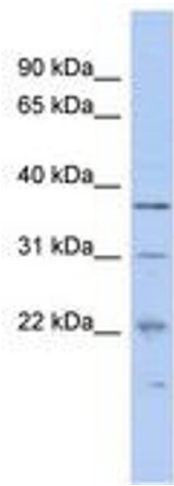


Image 1.