



[Go to Product page](#)

Datasheet for ABIN6743008  
**anti-A1CF antibody (N-Term)**

1 Image

Overview

Quantity:	100 µL
Target:	A1CF
Binding Specificity:	N-Term
Reactivity:	Human, Mouse, Rat, Horse, Rabbit, Cow, Dog, Zebrafish (Danio rerio), Guinea Pig, Monkey, Pig, Bat
Host:	Rabbit
Clonality:	Polyclonal
Conjugate:	This A1CF antibody is un-conjugated
Application:	Western Blotting (WB)

Product Details

Immunogen:	Synthetic peptide from N-Terminus of human A1CF (Q9NQ94-2, NP_055391). Percent identity by BLAST analysis: Human, Chimpanzee, Gorilla, Orangutan, Gibbon, Monkey, Galago, Marmoset, Mouse, Rat, Panda, Dog, Bovine, Bat, Rabbit, Horse, Pig, Guinea pig (100%), Elephant, Opossum, Turkey, Zebra finch, Chicken (92%).  Type of Immunogen: Synthetic peptide
Specificity:	Human A1CF
Predicted Reactivity:	Percent identity by BLAST analysis: Human, Mouse, Rat, Dog, Bovine, Rabbit, Horse, Pig (100%) Chicken (92%).
Purification:	Immunoaffinity purified

## Target Details

---

Target:	A1CF
Alternative Name:	A1CF / ACF ( <a href="#">A1CF Products</a> )
Background:	Name/Gene ID: A1CF  Synonyms: A1CF, ACF65, ACF64, APOBEC-1 stimulating protein, APOBEC1 complementation factor, APOBEC1CF, ACF, Apo-B RNA editing protein, APOBEC1-stimulating protein, RP11-564C4.2, ASP
Gene ID:	29974
NCBI Accession:	<a href="#">NP_055391</a>
UniProt:	<a href="#">Q9NQ94</a>

## Application Details

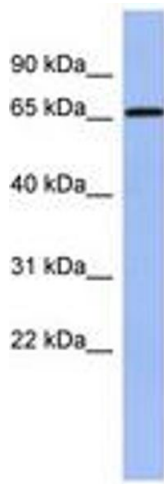
---

Application Notes:	Approved: WB (0.2 - 1 µg/mL)  Usage: Western Blot: Suggested dilution at 1 µg/mL in 5 % skim milk / PBS buffer, and HRP conjugated anti-Rabbit IgG should be diluted in 1: 50,000 - 100,000 as secondary antibody.
Comment:	Target Species of Antibody: Human
Restrictions:	For Research Use only

## Handling

---

Format:	Lyophilized
Reconstitution:	Distilled water
Concentration:	Lot specific
Buffer:	Lyophilized from PBS with 2 % sucrose
Handling Advice:	Avoid repeat freeze-thaw cycles.
Storage:	4 °C, -20 °C
Storage Comment:	Long term: -20°C, the use of 50% glycerol is recommended if storing aliquots in -20°C for long term use (up to 1 year)  Short term (less than 1 week): 4°C. Avoid freeze-thaw cycles.



**Image 1.**