



[Go to Product page](#)

Datasheet for ABIN6743026
anti-PAPOLB antibody (AA 35-84)

1 Image

Overview

Quantity:	100 µL
Target:	PAPOLB
Binding Specificity:	AA 35-84
Reactivity:	Human, Rabbit
Host:	Rabbit
Clonality:	Polyclonal
Conjugate:	This PAPOLB antibody is un-conjugated
Application:	Western Blotting (WB)

Product Details

Immunogen:	Synthetic peptide located between aa35-84 of human PAPOLB (A4D1Z6, NP_064529). Percent identity by BLAST analysis: Human, Gorilla, Rabbit (100%), Orangutan, Gibbon, Galago, Marmoset, Mouse, Rat, Elephant, Dog, Horse, Pig, Opossum, Guinea pig, Platypus, Lizard, Xenopus, Zebrafish (92%), Bovine, Bat, Chicken (84%). Type of Immunogen: Synthetic peptide
Specificity:	Human PAPOLB
Predicted Reactivity:	Percent identity by BLAST analysis: Human, Rabbit (100%) Mouse, Rat, Dog, Zebrafish (92%).
Purification:	Immunoaffinity purified

Target Details

Target:	PAPOLB
Alternative Name:	PAPOLB (PAPOLB Products)
Background:	Name/Gene ID: PAPOLB Synonyms: PAPOLB, PAP-beta, TPAP, PAPT, Poly(A) polymerase beta
Gene ID:	56903
NCBI Accession:	NP_064529
UniProt:	Q9NRJ5

Application Details

Application Notes:	Approved: WB (0.2 - 1 µg/mL) Usage: Western Blot: Suggested dilution at 1 µg/mL in 5 % skim milk / PBS buffer, and HRP conjugated anti-Rabbit IgG should be diluted in 1: 50,000 - 100,000 as secondary antibody.
Comment:	Target Species of Antibody: Human
Restrictions:	For Research Use only

Handling

Format:	Lyophilized
Reconstitution:	Distilled water
Concentration:	Lot specific
Buffer:	Lyophilized from PBS with 2 % sucrose
Handling Advice:	Avoid repeat freeze-thaw cycles.
Storage:	4 °C, -20 °C
Storage Comment:	Long term: -20°C, the use of 50% glycerol is recommended if storing aliquots in -20°C for long term use (up to 1 year) Short term (less than 1 week): 4°C. Avoid freeze-thaw cycles.

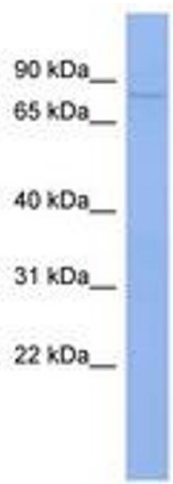


Image 1.