



[Go to Product page](#)

Datasheet for ABIN6743027

anti-PAPOLB antibody (AA 431-480)

1 Image

Overview

Quantity:	100 µL
Target:	PAPOLB
Binding Specificity:	AA 431-480
Reactivity:	Human, Guinea Pig, Dog
Host:	Rabbit
Clonality:	Polyclonal
Conjugate:	This PAPOLB antibody is un-conjugated
Application:	Western Blotting (WB)

Product Details

Immunogen:	Synthetic peptide located between aa431-480 of human PAPOLB (A4D1Z6, NP_064529). Percent identity by BLAST analysis: Human (100%), Gorilla, Galago, Mouse, Rat, Rabbit (92%), Bat (85%). Type of Immunogen: Synthetic peptide
Specificity:	Human PAPOLB
Predicted Reactivity:	Percent identity by BLAST analysis: Human (100%) Mouse, Rat, Rabbit (92%).
Purification:	Immunoaffinity purified

Target Details

Target:	PAPOLB
---------	--------

Target Details

Alternative Name: PAPOLB ([PAPOLB Products](#))

Background: Name/Gene ID: PAPOLB

Synonyms: PAPOLB, PAP-beta, TPAP, PAPT, Poly(A) polymerase beta

Gene ID: 56903

NCBI Accession: [NP_064529](#)

UniProt: [Q9NRJ5](#)

Application Details

Application Notes: Approved: WB (0.2 - 1 µg/mL)

Usage: Western Blot: Suggested dilution at 1 µg/mL in 5 % skim milk / PBS buffer, and HRP conjugated anti-Rabbit IgG should be diluted in 1: 50,000 - 100,000 as secondary antibody.

Comment: Target Species of Antibody: Human

Restrictions: For Research Use only

Handling

Format: Lyophilized

Reconstitution: Distilled water

Concentration: Lot specific

Buffer: Lyophilized from PBS with 2 % sucrose

Handling Advice: Avoid repeat freeze-thaw cycles.

Storage: 4 °C, -20 °C

Storage Comment: Long term: -20°C, the use of 50% glycerol is recommended if storing aliquots in -20°C for long term use (up to 1 year)

Short term (less than 1 week): 4°C. Avoid freeze-thaw cycles.

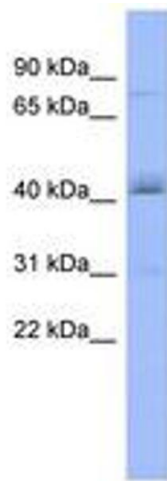


Image 1.