



[Go to Product page](#)

Datasheet for ABIN6743035  
**anti-MTHFSD antibody (N-Term)**

1 Image

Overview

Quantity:	100 µL
Target:	MTHFSD
Binding Specificity:	N-Term
Reactivity:	Human, Mouse, Dog, Cow, Horse, Rabbit, Guinea Pig, Monkey
Host:	Rabbit
Clonality:	Polyclonal
Conjugate:	This MTHFSD antibody is un-conjugated
Application:	Western Blotting (WB)

Product Details

Immunogen:	Synthetic peptide from N-Terminus of human MTHFSD (B7ZLC0, NP_073601). Percent identity by BLAST analysis: Human, Chimpanzee, Gorilla, Orangutan, Gibbon, Galago, Marmoset, Elephant, Dog, Bovine, Rabbit, Horse (100%), Bat, Pig (92%), Turkey, Chicken, Zebrafish (90%), Opossum, Xenopus (85%), Mouse (78%).  Type of Immunogen: Synthetic peptide
Specificity:	Human MTHFSD
Predicted Reactivity:	Percent identity by BLAST analysis: Human, Dog, Rabbit, Horse (100%) Pig (92%) Chicken, Zebrafish (90%).
Purification:	Immunoaffinity purified

## Target Details

---

Target:	MTHFSD
Alternative Name:	MTHFSD ( <a href="#">MTHFSD Products</a> )
Background:	Name/Gene ID: MTHFSD  Synonyms: MTHFSD
Gene ID:	64779
NCBI Accession:	<a href="#">NP_073601</a>
UniProt:	<a href="#">Q2M296</a>

## Application Details

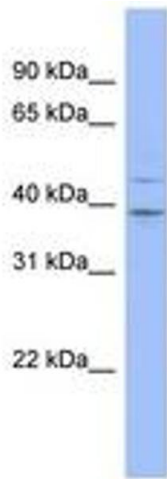
---

Application Notes:	Approved: WB (0.2 - 1 µg/mL)  Usage: Western Blot: Suggested dilution at 1 µg/mL in 5 % skim milk / PBS buffer, and HRP conjugated anti-Rabbit IgG should be diluted in 1: 50,000 - 100,000 as secondary antibody.
Comment:	Target Species of Antibody: Human
Restrictions:	For Research Use only

## Handling

---

Format:	Lyophilized
Reconstitution:	Distilled water
Concentration:	Lot specific
Buffer:	Lyophilized from PBS with 2 % sucrose
Handling Advice:	Avoid repeat freeze-thaw cycles.
Storage:	4 °C, -20 °C
Storage Comment:	Long term: -20°C, the use of 50% glycerol is recommended if storing aliquots in -20°C for long term use (up to 1 year)  Short term (less than 1 week): 4°C. Avoid freeze-thaw cycles.



**Image 1.**