



[Go to Product page](#)

Datasheet for ABIN6743048  
**anti-FAM71D antibody (AA 287-336)**

1 Image

Overview

Quantity:	100 µL
Target:	FAM71D
Binding Specificity:	AA 287-336
Reactivity:	Human, Dog
Host:	Rabbit
Clonality:	Polyclonal
Conjugate:	This FAM71D antibody is un-conjugated
Application:	Western Blotting (WB)

Product Details

Immunogen: Synthetic peptide located between aa287-336 of human FAM71D (Q8N9W8, NP\_775797).  
Percent identity by BLAST analysis: Human, Chimpanzee, Gorilla, Gibbon, Monkey (100%),  
Marmoset (92%), Guinea pig (91%), Bat (84%).

Type of Immunogen: Synthetic peptide

Specificity: Human FAM71D

Predicted Reactivity: Percent identity by BLAST analysis: Human (100%) Guinea pig (91%).

Purification: Immunoaffinity purified

Target Details

Target: FAM71D

## Target Details

---

Alternative Name:	<a href="#">FAM71D (FAM71D Products)</a>
Background:	Name/Gene ID: FAM71D  Synonyms: FAM71D, C14orf54, Protein FAM71D
Gene ID:	161142
NCBI Accession:	<a href="#">NP_775797</a>
UniProt:	<a href="#">Q8N9W8</a>

## Application Details

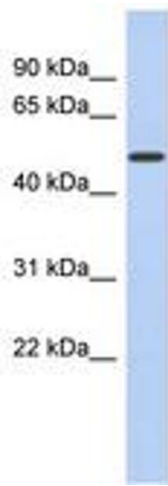
---

Application Notes:	Approved: WB (0.2 - 1 µg/mL)  Usage: Western Blot: Suggested dilution at 1 µg/mL in 5 % skim milk / PBS buffer, and HRP conjugated anti-Rabbit IgG should be diluted in 1: 50,000 - 100,000 as secondary antibody.
Comment:	Target Species of Antibody: Human
Restrictions:	For Research Use only

## Handling

---

Format:	Lyophilized
Reconstitution:	Distilled water
Concentration:	Lot specific
Buffer:	Lyophilized from PBS with 2 % sucrose
Handling Advice:	Avoid repeat freeze-thaw cycles.
Storage:	4 °C,-20 °C
Storage Comment:	Long term: -20°C, the use of 50% glycerol is recommended if storing aliquots in -20°C for long term use (up to 1 year)  Short term (less than 1 week): 4°C. Avoid freeze-thaw cycles.



**Image 1.**