

Datasheet for ABIN6743063
anti-MSH4 antibody (AA 107-156)[Go to Product page](#)

1 Image

Overview

Quantity:	100 µL
Target:	MSH4
Binding Specificity:	AA 107-156
Reactivity:	Human, Mouse, Rat, Cow, Dog, Horse, Pig
Host:	Rabbit
Clonality:	Polyclonal
Conjugate:	This MSH4 antibody is un-conjugated
Application:	Western Blotting (WB)

Product Details

Immunogen:	Synthetic peptide located between aa107-156 of human MSH4 (O15457, NP_002431). Percent identity by BLAST analysis: Human, Chimpanzee, Gibbon, Marmoset (100%), Monkey, Panda, Bat, Guinea pig (92%), Mouse, Dog, Bovine, Horse, Pig (85%), Rat (84%). Type of Immunogen: Synthetic peptide
Specificity:	Human MSH4
Predicted Reactivity:	Percent identity by BLAST analysis: Human (100%) Guinea pig (92%) Mouse, Dog, Bovine, Horse, Pig (85%) Rat (84%).
Purification:	Immunoaffinity purified

Target Details

Target:	MSH4
Alternative Name:	MSH4 (MSH4 Products)
Background:	Name/Gene ID: MSH4 Synonyms: MSH4, MutS (E. coli) homolog 4, HMSH4, MutS homolog 4 (E. coli), MutS protein homolog 4
Gene ID:	4438
NCBI Accession:	NP_002431
UniProt:	O15457

Application Details

Application Notes:	Approved: WB (0.2 - 1 µg/mL) Usage: Western Blot: Suggested dilution at 1 µg/mL in 5 % skim milk / PBS buffer, and HRP conjugated anti-Rabbit IgG should be diluted in 1: 50,000 - 100,000 as secondary antibody.
Comment:	Target Species of Antibody: Human
Restrictions:	For Research Use only

Handling

Format:	Lyophilized
Reconstitution:	Distilled water
Concentration:	Lot specific
Buffer:	Lyophilized from PBS with 2 % sucrose
Handling Advice:	Avoid repeat freeze-thaw cycles.
Storage:	4 °C, -20 °C
Storage Comment:	Long term: -20°C, the use of 50% glycerol is recommended if storing aliquots in -20°C for long term use (up to 1 year) Short term (less than 1 week): 4°C. Avoid freeze-thaw cycles.

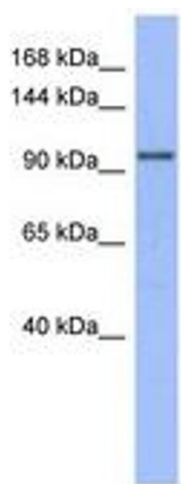


Image 1.