



[Go to Product page](#)

Datasheet for ABIN6743064
anti-TM7 antibody (C-Term)

1 Image

Overview

Quantity:	100 µL
Target:	TM7
Binding Specificity:	C-Term
Reactivity:	Human, Monkey
Host:	Rabbit
Clonality:	Polyclonal
Conjugate:	This TM7 antibody is un-conjugated
Application:	Western Blotting (WB)

Product Details

Immunogen:	Synthetic peptide from C-Terminus of human TPM1 (Q7Z6L8, NP_001018008). Percent identity by BLAST analysis: Human, Monkey, Marmoset, Opossum (100%), Mouse, Rat, Chicken (92%). Type of Immunogen: Synthetic peptide
Specificity:	Human TPM1 / Tropomyosin
Predicted Reactivity:	Percent identity by BLAST analysis: Human (100%) Mouse, Rat, Chicken (92%).
Purification:	Immunoaffinity purified

Target Details

Target:	TM7
Alternative Name:	TPM1 / Tropomyosin (TM7 Products)

Target Details

Background: Name/Gene ID: TPM1

Synonyms: TPM1, Alpha-tropomyosin, C15orf13, Cardiomyopathy, hypertrophic 3, CMD1Y, CMH3, HTM-alpha, Sarcomeric tropomyosin kappa, TMSA, Tropomyosin, Tropomyosin 1 (alpha), Tropomyosin alpha-1 chain, Tropomyosin-1

Gene ID: 7168

NCBI Accession: [NP_001018008](#)

UniProt: [P09493](#)

Application Details

Application Notes: Approved: WB (0.2 - 1 µg/mL)

Usage: Western Blot: Suggested dilution at 1 µg/mL in 5 % skim milk / PBS buffer, and HRP conjugated anti-Rabbit IgG should be diluted in 1: 50,000 - 100,000 as secondary antibody.

Not recommended for: IHC-P

Comment: Target Species of Antibody: Human

Restrictions: For Research Use only

Handling

Format: Lyophilized

Reconstitution: Distilled water

Concentration: Lot specific

Buffer: Lyophilized from PBS with 2 % sucrose

Handling Advice: Avoid repeat freeze-thaw cycles.

Storage: 4 °C, -20 °C

Storage Comment: Long term: -20°C, the use of 50% glycerol is recommended if storing aliquots in -20°C for long term use (up to 1 year)

Short term (less than 1 week): 4°C. Avoid freeze-thaw cycles.

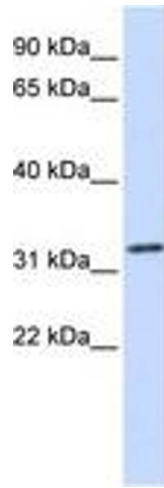


Image 1.