



Datasheet for ABIN6743085
anti-CYB561 antibody (AA 144-193)



[Go to Product page](#)

1 Image

Overview

Quantity:	100 µL
Target:	CYB561
Binding Specificity:	AA 144-193
Reactivity:	Human, Mouse, Rat, Guinea Pig, Cow, Dog, Horse, Rabbit, Sheep, Pig, Hamster
Host:	Rabbit
Clonality:	Polyclonal
Conjugate:	This CYB561 antibody is un-conjugated
Application:	Western Blotting (WB)

Product Details

Immunogen:	Synthetic peptide located between aa144-193 of human CYB561 (P49447, NP_001906). Percent identity by BLAST analysis: Human, Chimpanzee, Gorilla, Orangutan, Gibbon, Galago, Mouse, Rat, Sheep, Hamster, Elephant, Dog, Bovine, Rabbit, Horse, Pig, Guinea pig (100%), Monkey, Panda, Bat (92%), Marmoset (85%). Type of Immunogen: Synthetic peptide
Specificity:	Human CYB561
Predicted Reactivity:	Percent identity by BLAST analysis: Human, Mouse, Rat, Dog, Rabbit, Pig, Guinea pig (100%).
Purification:	Immunoaffinity purified

Target Details

Target:	CYB561
Alternative Name:	CYB561 (CYB561 Products)
Background:	Name/Gene ID: CYB561 Synonyms: CYB561, Cytochrome b-561, FRRS2, Ferric-chelate reductase 2, Cytochrome b561
Gene ID:	1534
NCBI Accession:	NP_001906
UniProt:	P49447

Application Details

Application Notes:	Approved: WB (0.2 - 1 µg/mL) Usage: Western Blot: Suggested dilution at 1 µg/mL in 5 % skim milk / PBS buffer, and HRP conjugated anti-Rabbit IgG should be diluted in 1: 50,000 - 100,000 as secondary antibody.
Comment:	Target Species of Antibody: Human
Restrictions:	For Research Use only

Handling

Format:	Lyophilized
Reconstitution:	Distilled water
Concentration:	Lot specific
Buffer:	Lyophilized from PBS with 2 % sucrose
Handling Advice:	Avoid repeat freeze-thaw cycles.
Storage:	4 °C, -20 °C
Storage Comment:	Long term: -20°C, the use of 50% glycerol is recommended if storing aliquots in -20°C for long term use (up to 1 year) Short term (less than 1 week): 4°C. Avoid freeze-thaw cycles.

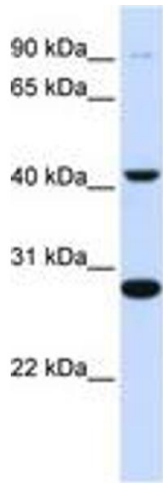


Image 1.