

Datasheet for ABIN6743100  
**anti-MLH3 antibody (AA 1188-1237)**



[Go to Product page](#)

1 Image

### Overview

Quantity:	100 µL
Target:	MLH3
Binding Specificity:	AA 1188-1237
Reactivity:	Human, Dog
Host:	Rabbit
Clonality:	Polyclonal
Conjugate:	This MLH3 antibody is un-conjugated
Application:	Western Blotting (WB)

### Product Details

Immunogen:	Synthetic peptide located between aa1188-1237 of human MLH3 (Q2M1Z1, NP_055196). Percent identity by BLAST analysis: Human, Chimpanzee, Monkey, Dog (100%), Marmoset (92%), Galago (85%).  Type of Immunogen: Synthetic peptide
Specificity:	Human MLH3
Predicted Reactivity:	Percent identity by BLAST analysis: Human, Dog (100%).
Purification:	Immunoaffinity purified

### Target Details

Target:	MLH3
---------	------

## Target Details

---

Alternative Name:	MLH3 ( <a href="#">MLH3 Products</a> )
Background:	Name/Gene ID: MLH3  Synonyms: MLH3, HNPCC7, MutL homolog 3 (E. coli), MutL protein homolog 3, MutL (E. coli) homolog 3
Gene ID:	27030
NCBI Accession:	<a href="#">NP_055196</a>
UniProt:	<a href="#">Q9UHC1</a>
Pathways:	<a href="#">Chromatin Binding</a>

## Application Details

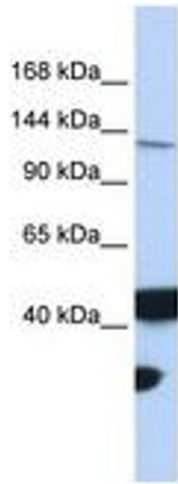
---

Application Notes:	Approved: WB (0.2 - 1 µg/mL)  Usage: Western Blot: Suggested dilution at 1 µg/mL in 5 % skim milk / PBS buffer, and HRP conjugated anti-Rabbit IgG should be diluted in 1: 50,000 - 100,000 as secondary antibody.
Comment:	Target Species of Antibody: Human
Restrictions:	For Research Use only

## Handling

---

Format:	Lyophilized
Reconstitution:	Distilled water
Concentration:	Lot specific
Buffer:	Lyophilized from PBS with 2 % sucrose
Handling Advice:	Avoid repeat freeze-thaw cycles.
Storage:	4 °C, -20 °C
Storage Comment:	Long term: -20°C, the use of 50% glycerol is recommended if storing aliquots in -20°C for long term use (up to 1 year)  Short term (less than 1 week): 4°C. Avoid freeze-thaw cycles.



**Image 1.**