



[Go to Product page](#)

Datasheet for ABIN6743103
anti-UPB1 antibody (AA 287-336)

1 Image

Overview

Quantity:	100 µL
Target:	UPB1
Binding Specificity:	AA 287-336
Reactivity:	Human, Dog, Horse, Cow, Pig, Monkey, Xenopus laevis
Host:	Rabbit
Clonality:	Polyclonal
Conjugate:	This UPB1 antibody is un-conjugated
Application:	Western Blotting (WB)

Product Details

Immunogen:	Synthetic peptide located between aa287-336 of human UPB1 (Q9UBR1, NP_057411). Percent identity by BLAST analysis: Human, Chimpanzee, Gorilla, Orangutan, Gibbon, Monkey, Galago, Marmoset, Elephant, Dog, Bovine, Horse, Pig, Xenopus, Trout, Salmon, Sea squirt (100%), Mouse, Rat, Hamster, Rabbit, Guinea pig, Frog, Catfish, Zebrafish, Drosophila (92%), Bat (90%), Slime mold (84%), Pike (83%). Type of Immunogen: Synthetic peptide
Specificity:	Human UPB1
Predicted Reactivity:	Percent identity by BLAST analysis: Human, Dog, Bovine, Horse, Pig, Xenopus (100%) Mouse, Rabbit, Zebrafish (92%).
Purification:	Immunoaffinity purified

Target Details

Target:	UPB1
Alternative Name:	UPB1 (UPB1 Products)
Background:	Name/Gene ID: UPB1 Synonyms: UPB1, Beta-alanine synthase, Beta-ureidopropionase, Ureidopropionase, beta, BUP-1, BUP1
Gene ID:	51733
NCBI Accession:	NP_057411
UniProt:	Q9UBR1

Application Details

Application Notes:	Approved: WB (0.2 - 1 µg/mL) Usage: Western Blot: Suggested dilution at 1 µg/mL in 5 % skim milk / PBS buffer, and HRP conjugated anti-Rabbit IgG should be diluted in 1: 50,000 - 100,000 as secondary antibody.
Comment:	Target Species of Antibody: Human
Restrictions:	For Research Use only

Handling

Format:	Lyophilized
Reconstitution:	Distilled water
Concentration:	Lot specific
Buffer:	Lyophilized from PBS with 2 % sucrose
Handling Advice:	Avoid repeat freeze-thaw cycles.
Storage:	4 °C, -20 °C
Storage Comment:	Long term: -20°C, the use of 50% glycerol is recommended if storing aliquots in -20°C for long term use (up to 1 year) Short term (less than 1 week): 4°C. Avoid freeze-thaw cycles.

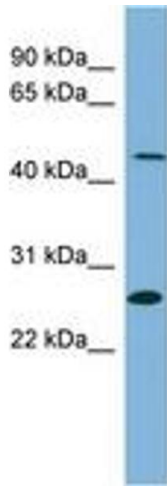


Image 1.